

PLIN3 Antibody

Purified Mouse Monoclonal Antibody (Mab)

Catalog # AM8698b

Product Information

Application	WB, E
Primary Accession	O60664
Reactivity	Human
Host	Mouse
Clonality	monoclonal
Isotype	IgG2a,k
Clone Names	1651CT755.90.33
Calculated MW	47075

Additional Information

Gene ID	10226
Other Names	Perilipin-3, 47 kDa mannose 6-phosphate receptor-binding protein, 47 kDa MPR-binding protein, Cargo selection protein TIP47, Mannose-6-phosphate receptor-binding protein 1, Placental protein 17, PP17, PLIN3, M6PRBP1, TIP47
Target/Specificity	This PLIN3 antibody is generated from a mouse immunized with a KLH conjugated synthetic peptide between 1-434 amino acids from human PLIN3.
Dilution	WB~~1:2000 E~~Use at an assay dependent concentration.
Format	Purified monoclonal antibody supplied in PBS with 0.09% (W/V) sodium azide. This antibody is purified through a protein G column, followed by dialysis against PBS.
Storage	Maintain refrigerated at 2-8°C for up to 2 weeks. For long term storage store at -20°C in small aliquots to prevent freeze-thaw cycles.
Precautions	PLIN3 Antibody is for research use only and not for use in diagnostic or therapeutic procedures.

Protein Information

Name	PLIN3
Synonyms	M6PRBP1, TIP47 {ECO:0000303 PubMed:95901
Function	Structural component of lipid droplets, which is required for the formation and maintenance of lipid storage droplets (PubMed: 34077757). Required for

the transport of mannose 6-phosphate receptors (MPR) from endosomes to the trans-Golgi network (PubMed:[9590177](#)).

Cellular Location

Lipid droplet. Endosome membrane; Peripheral membrane protein; Cytoplasmic side. Cytoplasm. Note=Membrane associated on endosomes (PubMed:15545278). Detected in the envelope and the core of lipid bodies and in lipid sails (PubMed:15545278)

Background

Required for the transport of mannose 6-phosphate receptors (MPR) from endosomes to the trans-Golgi network.

References

Diaz E.,et al.Cell 93:433-443(1998).

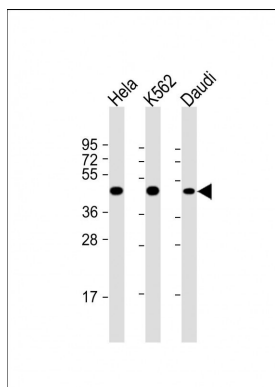
Than N.G.,et al.Eur. J. Biochem. 258:752-757(1998).

Than N.G.,et al.Tumor Biol. 20:184-192(1999).

Kalnine N.,et al.Submitted (MAY-2003) to the EMBL/GenBank/DDBJ databases.

Ota T.,et al.Nat. Genet. 36:40-45(2004).

Images



All lanes : Anti-PLIN3 Antibody at 1:2000 dilution Lane 1: HeLa whole cell lysate Lane 2: K562 whole cell lysate Lane 3: Daudi whole cell lysate Lysates/proteins at 20 µg per lane. Secondary Goat Anti-mouse IgG, (H+L), Peroxidase conjugated at 1/10000 dilution. Predicted band size : 47 kDa Blocking/Dilution buffer: 5% NFDM/TBST.

Please note: All products are 'FOR RESEARCH USE ONLY. NOT FOR USE IN DIAGNOSTIC OR THERAPEUTIC PROCEDURES'.