

FGFR1OP2 Antibody

Purified Mouse Monoclonal Antibody (Mab)

Catalog # AM8701b

Product Information

Application	FC, E
Primary Accession	Q9NVK5
Reactivity	Human, Mouse
Host	Mouse
Clonality	monoclonal
Isotype	IgG2a,k
Clone Names	1675CT332.283.56
Calculated MW	29426

Additional Information

Gene ID	26127
Other Names	FGFR1 oncogene partner 2, FGFR1OP2
Target/Specificity	This FGFR1OP2 antibody is generated from a mouse immunized with a recombinant protein between 1-172 amino acids of human FGFR1OP2.
Dilution	FC~~1:25 E~~Use at an assay dependent concentration.
Format	Purified monoclonal antibody supplied in PBS with 0.09% (W/V) sodium azide. This antibody is purified through a protein G column, followed by dialysis against PBS.
Storage	Maintain refrigerated at 2-8°C for up to 2 weeks. For long term storage store at -20°C in small aliquots to prevent freeze-thaw cycles.
Precautions	FGFR1OP2 Antibody is for research use only and not for use in diagnostic or therapeutic procedures.

Protein Information

Name	FGFR1OP2
Function	May be involved in wound healing pathway.
Cellular Location	Cytoplasm.
Tissue Location	Expressed in bone marrow, spleen and thymus.

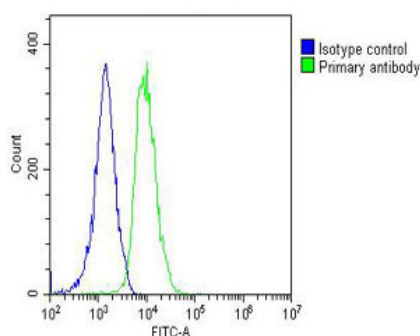
Background

May be involved in wound healing pathway.

References

Zhang Q.-H.,et al.Genome Res. 10:1546-1560(2000).
Ota T.,et al.Nat. Genet. 36:40-45(2004).
Lin L.,et al.Submitted (DEC-2003) to the EMBL/GenBank/DDBJ databases.
Bechtel S.,et al.BMC Genomics 8:399-399(2007).
Grand E.K.,et al.Genes Chromosomes Cancer 40:78-83(2004).

Images



Overlay histogram showing U-2OS cells stained with AM8701b(green line). The cells were fixed with 2% paraformaldehyde (10 min) and then permeabilized with 90% methanol for 10 min. The cells were then incubated in 2% bovine serum albumin to block non-specific protein-protein interactions followed by the antibody (AM8701b, 1:25 dilution) for 60 min at 37°C. The secondary antibody used was Goat-Anti-Mouse IgG, DyLight® 488 Conjugated Highly Cross-Adsorbed(OJ192088) at 1/200 dilution for 40 min at 37°C. Isotype control antibody (blue line) was mouse IgG2a (1µg/1×10⁶ cells) used under the same conditions. Acquisition of >10, 000 events was performed.

Please note: All products are 'FOR RESEARCH USE ONLY. NOT FOR USE IN DIAGNOSTIC OR THERAPEUTIC PROCEDURES'.