

Anti-Alpha Synuclein Antibody

Mouse monoclonal antibody

Catalog # AN1294

Product Information

Application	WB, IF
Primary Accession	P37840
Reactivity	Human, Mouse, Rat
Host	Mouse
Clonality	Monoclonal
Isotype	IgG1
Clone Names	2A7
Calculated MW	14460

Additional Information

Gene ID	6622
Other Names	Alpha-synuclein, Non-A beta component of AD amyloid, Non-A4 component of amyloid precursor, NACP, SNCA, NACP, PARK1
Target/Specificity	Specific for endogenous levels of the ~15 kDa alpha synuclein protein.
Dilution	WB~~1:1000 IF~~1:1000
Format	Mouse ascites fluid.
Storage	Maintain refrigerated at 2-8°C for up to 6 months. For long term storage store at -20°C in small aliquots to prevent freeze-thaw cycles.
Precautions	Anti-Alpha Synuclein Antibody is for research use only and not for use in diagnostic or therapeutic procedures.
Shipping	Blue Ice

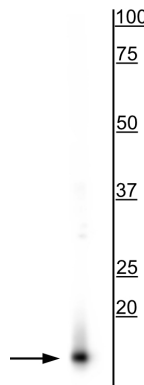
Background

Alpha-synuclein is a presynaptic neuronal protein that is thought to be involved in the formation of SNARE complexes. Most significantly, aggregated alpha-synuclein is one of the major components found in the Lewy bodies that occur in Parkinson's disease (PD) and other neurodegenerative disorders (Okochi et al., 2000). Early onset Parkinson's disease may be caused by a duplication or triplication of one of the alpha synuclein genes (Chartier-Harlin MC et al., 2004 and Singleton, AB et al., 2005). Alpha-synuclein is also found in the Lewy bodies of patients with diffuse Lewy body disease and inclusions in glial cells in the brains of patients with multiple system atrophy (MSA) and amyotrophic lateral sclerosis (ALS).

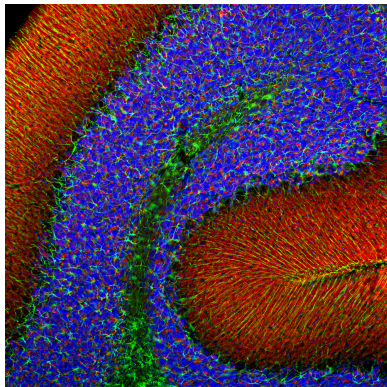
References

Okochi M, Walter J, Koyama A, Nakajo S, Baba M, Iwatsubo T, Meijer L, Kahle PJ, Haass C (2000) Constitutive phosphorylation of the Parkinson's disease associated alpha-synuclein. J Biol Chem Jan 7;275(1): 390-7.
Chartier-Harlin, MC. et al. Alpha-synuclein locus duplication as a cause of familial Parkinson's disease. Lancet 364: 1167-1169 (2004).
Singleton, AB et al. Alpha-synuclein locus triplication causes Parkinson's disease. Science 302: 841 (2003).

Images



Western blot of rat brain lysate showing specific immunolabeling of the ~15 kDa alpha synuclein protein.



Immunofluorescence of rat cerebellum showing specific alpha-synuclein staining in synaptic regions in red and GFAP (cat # 620-GFAP) in the cytoskeleton of glia and astrocytes in green. DNA is stained blue.

Please note: All products are 'FOR RESEARCH USE ONLY. NOT FOR USE IN DIAGNOSTIC OR THERAPEUTIC PROCEDURES'.