

Anti-AIF1/Iba1 Antibody

Our Anti-AIF1/Iba1 rabbit polyclonal primary antibody from PhosphoSolutions is produced in-house. It
Catalog # AN1299

Product Information

Application	WB, ICC
Primary Accession	P55008
Host	Rabbit
Clonality	Polyclonal
Isotype	IgG
Calculated MW	16703

Additional Information

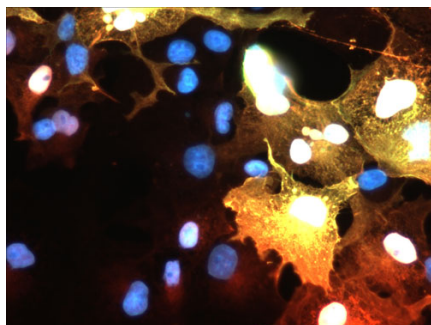
Gene ID	199
Other Names	Allograft inflammatory factor 1, AIF-1, Ionized calcium-binding adapter molecule 1, Protein G1, AIF1, G1, IBA1
Target/Specificity	AIF1, allograft inflammatory factor-1, (also known as Iba1, Ionized calcium binding adaptor molecule 1) is a 17 kDa protein that is a pro-inflammatory molecule that mediates calcium signals (Ito, D. et al 1998). During inflammation, increased expression of AIF1 occurs in microglia, macrophages, T-cells, synoviocytes, and adipocytes (Watano, K., et al, 2001). Expression of AIF-1 has been observed in healthy brains and varies throughout the day, gaining the highest expression in the prefrontal and parietal cortices when sleeping (Romcy-Pereira, R.N, et al, 2009). Increased expression of AIF1 has been observed in several diseases including breast cancer (Liu, S., et al 2008), atherosclerosis (Utans, U., et al, 1995), and rheumatoid arthritis (Kimura, M., et al, 2007).
Dilution	WB~~1:1000 ICC~~N/A
Format	Antigen Affinity Purified from Pooled Serum
Storage	Maintain refrigerated at 2-8°C for up to 6 months. For long term storage store at -20°C in small aliquots to prevent freeze-thaw cycles.
Precautions	Anti-AIF1/Iba1 Antibody is for research use only and not for use in diagnostic or therapeutic procedures.
Shipping	Blue Ice

Background

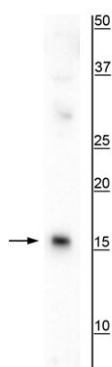
AIF1, allograft inflammatory factor-1, (also known as Iba1, Ionized calcium binding adaptor molecule 1) is a 17 kDa protein that is a pro-inflammatory molecule that mediates calcium signals (Ito, D. et al 1998). During

inflammation, increased expression of AIF1 occurs in microglia, macrophages, T-cells, synoviocytes, and adipocytes (Watano, K., et al, 2001). Expression of AIF-1 has been observed in healthy brains and varies throughout the day, gaining the highest expression in the prefrontal and parietal cortices when sleeping (Romcy-Pereira, R.N, et al, 2009). Increased expression of AIF1 has been observed in several diseases including breast cancer (Liu, S., et al 2008), atherosclerosis (Utans, U., et al, 1995), and rheumatoid arthritis (Kimura, M., et al, 2007).

Images



Immunofluorescence of FLAG-tagged AIF1 transfected COS cells showing AIF1 staining in red (cat. AN1299, 1:50) and FLAG staining in green causing positive transfected cells to appear yellow. DNA is stained blue with DAPI.



Western blot of mouse spleen lysate showing specific immunolabeling of the ~17 kDa AIF1/Iba1 protein.

Please note: All products are 'FOR RESEARCH USE ONLY. NOT FOR USE IN DIAGNOSTIC OR THERAPEUTIC PROCEDURES'.