

Anti-ATF2 (Thr52) Antibody

Our Anti-ATF2 (Thr52) rabbit polyclonal phosphospecific primary antibody from PhosphoSolutions is pr
Catalog # AN1318

Product Information

Application	WB
Primary Accession	P15336
Host	Rabbit
Clonality	Polyclonal
Isotype	IgG
Calculated MW	54537

Additional Information

Gene ID	1386
Other Names	Activating transcription factor 2 antibody, Activating transcription factor 2 splice variant ATF2 var2 antibody, ATF 2 antibody, Atf-2 antibody, Atf2 antibody, ATF2 protein antibody, ATF2_HUMAN antibody, cAMP Response Element Binding Protein 2 antibody, cAMP response element binding protein CRE BP1 antibody, cAMP response element-binding protein CRE-BP1 antibody, cAMP responsive element binding protein 2, formerly antibody, cAMP-dependent transcription factor ATF-2 antibody, cAMP-responsive element-binding protein 2 antibody, CRE BP1 antibody, CRE-BP antibody, CREB 2 antibody, CREB-2 antibody, CREB2 antibody, CREBP1 antibody, Cyclic AMP dependent transcription factor ATF 2 antibody, Cyclic AMP-dependent transcription factor ATF-2 antibody, Cyclic AMP-responsive element-binding protein 2 antibody, D130078H02Rik antibody, D18875 antibody, HB 16 antibody, HB16 antibody, Histone acetyltransferase ATF2 antibody, MGC105211 antibody, MGC105222 antibody, MGC111558 antibody, MGC142504 antibody, mXBP antibody, MXBP protein antibody, Tg(Gzma-Klra1)7Wum antibody, TREB 7 antibody, TREB7 antibody
Target/Specificity	The transcription factor ATF2 is a member of the ATF/CREB family of leucine zipper proteins. In response to stress stimuli, it activates a variety of gene targets that are involved in oncogenesis, and has been correlated with maintenance of a cancer cell phenotype (Vlahopoulos et al., 2008). Inhibiting ATF2 impedes melanoma development and elicits tumor suppressor function (Bhoumik et al., 2008). To act as a tumor suppressor, ATF2 must localize at the mitochondria, and phosphorylation at Thr-52 by PKCε regulates this translocation (Lau et al., 2012).
Dilution	WB~~1:1000
Format	Antigen Affinity Purified from Pooled Serum
Storage	Maintain refrigerated at 2-8°C for up to 6 months. For long term storage store at -20°C in small aliquots to prevent freeze-thaw cycles.

Precautions

Anti-ATF2 (Thr52) Antibody is for research use only and not for use in diagnostic or therapeutic procedures.

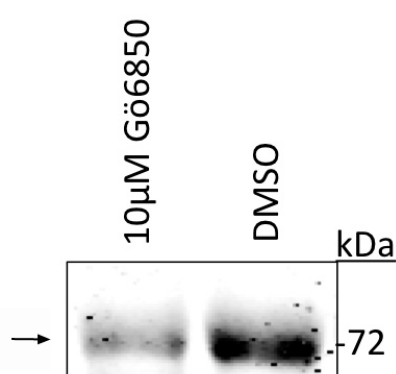
Shipping

Blue Ice

Background

The transcription factor ATF2 is a member of the ATF/CREB family of leucine zipper proteins. In response to stress stimuli, it activates a variety of gene targets that are involved in oncogenesis, and has been correlated with maintenance of a cancer cell phenotype (Vlahopoulos et al., 2008). Inhibiting ATF2 impedes melanoma development and elicits tumor suppressor function (Bhoumik et al., 2008). To act as a tumor suppressor, ATF2 must localize at the mitochondria, and phosphorylation at Thr-52 by PKC ϵ regulates this translocation (Lau et al., 2012).

Images



Western blot of UACC903 melanoma cell line lysate (DMSO) showing specific immunolabeling of the ~ 72 kDa ATF2 protein phosphorylated at Thr52. Immunolabeling is reduced by treatment of the lysate with the PKC catalytic inhibitor Gö 6850. Image courtesy of Eric Lau and Ze'ev Ronai.

Please note: All products are 'FOR RESEARCH USE ONLY. NOT FOR USE IN DIAGNOSTIC OR THERAPEUTIC PROCEDURES'.