

Anti-Beclin1 (Ser234) Antibody

Our Anti-Beclin1 (Ser234) rabbit polyclonal phosphospecific primary antibody from PhosphoSolutions i
Catalog # AN1320

Product Information

| | |
|--------------------------|------------------------|
| Application | WB |
| Primary Accession | Q14457 |
| Host | Rabbit |
| Clonality | Polyclonal |
| Isotype | IgG |
| Calculated MW | 51896 |

Additional Information

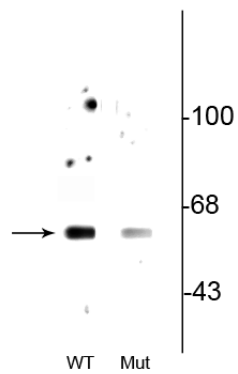
| | |
|---------------------------|---|
| Gene ID | 8678 |
| Other Names | PG6 antibody, ATG 6 antibody, ATG6 antibody, ATG6 autophagy related 6 homolog antibody, Bcl-2-interacting protein beclin antibody, Beclin 1 (coiled coil moesin like BCL2 interacting protein) antibody, Beclin 1 autophagy related antibody, Beclin-1 antibody, Beclin1 antibody, BECN 1 antibody, Becn1 antibody, BECN1_HUMAN antibody, Coiled coil myosin like BCL2 interacting protein antibody, Coiled-coil myosin-like BCL2-interacting protein antibody, GT197 antibody, Protein GT197 antibody, VPS 30 antibody, VPS30 antibody |
| Target/Specificity | Beclin-1 plays a key role in tumor suppression and autophagy. It has been suggested that autophagy proteins such as beclin-1 can inhibit tumorigenesis and that decreased expression of these proteins may contribute to the development of human malignancies (Liang et al., 1999). Beclin-1 has been shown to interact with 14-3-3 proteins through Akt-mediated phosphorylation at Ser-234 (Wang et al., 2012). |
| Dilution | WB~~1:1000 |
| Format | Antigen Affinity Purified from Pooled Serum |
| Storage | Maintain refrigerated at 2-8°C for up to 6 months. For long term storage store at -20°C in small aliquots to prevent freeze-thaw cycles. |
| Precautions | Anti-Beclin1 (Ser234) Antibody is for research use only and not for use in diagnostic or therapeutic procedures. |
| Shipping | Blue Ice |

Background

Beclin-1 plays a key role in tumor suppression and autophagy. It has been suggested that autophagy proteins such as beclin-1 can inhibit tumorigenesis and that decreased expression of these proteins may

contribute to the development of human malignancies (Liang et al., 1999). Beclin-1 has been shown to interact with 14-3-3 proteins through Akt-mediated phosphorylation at Ser-234 (Wang et al., 2012).

Images



Western blot of wild type (WT) beclin-1 expressed in HeLa cell lysate showing specific immunolabeling of beclin-1 phosphorylated at Ser234. This immunolabeling is decreased in the beclin-1 double alanine substitution mutant (S234A, S295A: Mut) expressed in HeLa cell lysate.

Please note: All products are 'FOR RESEARCH USE ONLY. NOT FOR USE IN DIAGNOSTIC OR THERAPEUTIC PROCEDURES'.