

## Anti-COBRA1 (NELF-B) Antibody

Our Anti-COBRA1 (NELF-B) primary antibody from PhosphoSolutions is mouse monoclonal. It detects huma  
Catalog # AN1339

### Product Information

---

<b>Application</b>	WB
<b>Primary Accession</b>	<a href="#">Q8WX92</a>
<b>Host</b>	Mouse
<b>Clonality</b>	Monoclonal
<b>Isotype</b>	IgG1
<b>Clone Names</b>	F7E4
<b>Calculated MW</b>	65697

### Additional Information

---

<b>Gene ID</b>	25920
<b>Other Names</b>	A730008L03Rik antibody, AB041607 antibody, AI663983 antibody, Cofactor of BRCA1 antibody, DKFZp586B0519 antibody, KIAA1182 antibody, Negative elongation factor B antibody, Negative elongation factor protein B antibody, Nelf b antibody, NELF-B antibody, NELFB antibody, RGD1307832 antibody, RP13-122B23.3 antibody, RP23-132N23.4 antibody
<b>Target/Specificity</b>	COBRA1 (cofactor of BRCA1) also known as NELF-B, is an essential component of the negative elongation factor (NELF) complex. COBRA1 has been shown to directly bind estrogen receptor alpha (ER $\alpha$ ) and repress ER $\alpha$ -mediated transcription (Aiyar SE et al., 2004). COBRA1 has also been demonstrated to interact with c-Jun and c-Fos suggesting a role in modulation of the AP-1 pathway and therefore may be important in cell proliferation, differentiation, apoptosis and oncogenesis (Zhong H et al., 2004)
<b>Dilution</b>	WB~~1:1000
<b>Format</b>	Protein G Purified
<b>Storage</b>	Maintain refrigerated at 2-8°C for up to 6 months. For long term storage store at -20°C in small aliquots to prevent freeze-thaw cycles.
<b>Precautions</b>	Anti-COBRA1 (NELF-B) Antibody is for research use only and not for use in diagnostic or therapeutic procedures.
<b>Shipping</b>	Blue Ice

### Background

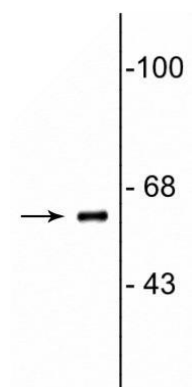
---

COBRA1 (cofactor of BRCA1) also known as NELF-B, is an essential component of the negative elongation factor (NELF) complex. COBRA1 has been shown to directly bind estrogen receptor alpha (ER $\alpha$ ) and repress

ER $\alpha$ -mediated transcription (Aiyar SE et al., 2004). COBRA1 has also been demonstrated to interact with c-Jun and c-Fos suggesting a role in modulation of the AP-1 pathway and therefore may be important in cell proliferation, differentiation, apoptosis and oncogenesis (Zhong H et al., 2004)

## Images

---



Western blot of neonatal rat brain lysate showing specific immunolabeling of the ~62 kDa COBRA1 protein.

Please note: All products are 'FOR RESEARCH USE ONLY. NOT FOR USE IN DIAGNOSTIC OR THERAPEUTIC PROCEDURES'.