

# Anti-Myosin IIA Heavy Chain (Ser-1943), Phosphospecific Antibody

Catalog # AN1846

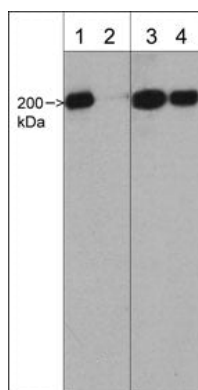
## Product Information

<b>Application</b>	WB, ICC
<b>Primary Accession</b>	<a href="#">P35579</a>
<b>Host</b>	Rabbit
<b>Clonality</b>	Rabbit Polyclonal
<b>Isotype</b>	IgG
<b>Calculated MW</b>	226532

## Additional Information

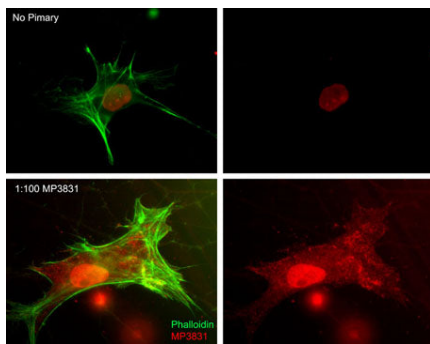
<b>Gene ID</b>	4627
<b>Other Names</b>	NMHC-IIA, MYH9, myosin heavy chain
<b>Dilution</b>	WB~~1:1000 ICC~~N/A
<b>Storage</b>	Maintain refrigerated at 2-8°C for up to 6 months. For long term storage store at -20°C in small aliquots to prevent freeze-thaw cycles.
<b>Precautions</b>	Anti-Myosin IIA Heavy Chain (Ser-1943), Phosphospecific Antibody is for research use only and not for use in diagnostic or therapeutic procedures.
<b>Shipping</b>	Blue Ice

## Images



Western blot image of human A431 cells. The blots were untreated (lanes 1 & 3) or treated with lambda phosphatase (lanes 2 & 4), then probed with rabbit polyclonal Myosin IIA Heavy Chain (Ser-1943), phospho-specific antibody (lanes 1 & 2) or rabbit polyclonal Myosin IIA Heavy Chain (a.a. 1936-1950) antibody (lanes 3 & 4).

Immunocytochemical labeling of myosin IIA heavy chain phosphorylation relative to F-actin in chick fibroblasts. The cells were labeled with rabbit polyclonal Myosin IIA



Heavy Chain (Ser-1943) antibody (AN1846), then detected using appropriate secondary antibody (Bottom, Red). This labeling is compared to F-actin staining (Bottom, Green) and to secondary only (Top). (Image provided by Dr. Gianluca Gallo at Drexel University).

Please note: All products are 'FOR RESEARCH USE ONLY. NOT FOR USE IN DIAGNOSTIC OR THERAPEUTIC PROCEDURES'.