

# Anti-PAK6 (N-terminal region) Antibody

Catalog # AN1883

## Product Information

---

Application	WB
Primary Accession	<a href="#">Q9NQU5</a>
Host	Rabbit
Clonality	Rabbit Polyclonal
Isotype	IgG
Calculated MW	74869

## Additional Information

---

Gene ID	106821730;56924
Other Names	p21, PAK
Dilution	WB~~1:1000
Storage	Maintain refrigerated at 2-8°C for up to 6 months. For long term storage store at -20°C in small aliquots to prevent freeze-thaw cycles.
Precautions	Anti-PAK6 (N-terminal region) Antibody is for research use only and not for use in diagnostic or therapeutic procedures.
Shipping	Blue Ice

## Background

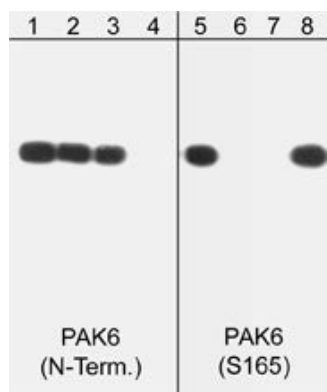
---

p21-activated kinase 6 (PAK6) is a member of the PAK family of serine/threonine kinases. These kinases have a highly conserved amino-terminal Cdc42/Rac interactive binding domain and a carboxyl-terminal kinase domain. PAK kinases are implicated in the regulation of a number of cellular processes, including cytoskeleton rearrangement, apoptosis and the MAP kinase signaling pathway. PAK6 interacts with the androgen receptor, a steroid hormone transcription factor involved in male sexual differentiation and development. PAK6 is highly expressed in testis and prostate tissues. Regulation of PAK6 kinase activity occurs through multiple sites of phosphorylation. Activation of PAK6 requires autophosphorylation of Ser-560 and MKK-6 induced phosphorylation of Tyr-566. In addition, p38 MAPK can phosphorylate Ser-165, which increases PAK6 kinase activity. Thus, multiple signaling pathways may regulate the activity of PAK6 through differential phosphorylation.

## Images

---

Western blots of human PAK6 recombinant protein phosphorylated by ERK2. The blot was exposed to lambda phosphatase (lanes 2 & 6) then probed with anti-PAK6 (N-terminal) (lanes 1-4) or anti-PAK6 (Ser-165) phospho-specific (lanes 5-8). The antibodies were used in



the presence of unrelated (lane 3) and PAK6 (N-terminal) (lane 4) peptide or PAK6 (Ser-165) (lane 7) and unrelated phospho-serine (lane 8) peptides, respectively.

Please note: All products are 'FOR RESEARCH USE ONLY. NOT FOR USE IN DIAGNOSTIC OR THERAPEUTIC PROCEDURES'.