

Anti-Paxillin (Tyr-118), Phosphospecific Antibody

Catalog # AN1889

Product Information

Application	WB
Primary Accession	P49023
Reactivity	Rat
Host	Rabbit
Clonality	Rabbit Polyclonal
Isotype	IgG
Calculated MW	64505

Additional Information

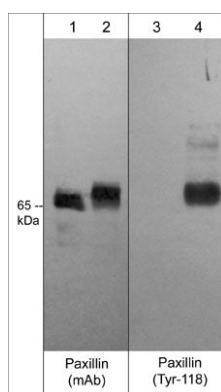
Gene ID	5829
Other Names	Paxillin, PXN
Dilution	WB~~1:1000
Storage	Maintain refrigerated at 2-8°C for up to 6 months. For long term storage store at -20°C in small aliquots to prevent freeze-thaw cycles.
Precautions	Anti-Paxillin (Tyr-118), Phosphospecific Antibody is for research use only and not for use in diagnostic or therapeutic procedures.
Shipping	Blue Ice

Background

Paxillin is involved in focal adhesion formation during cell adhesion and migration. Paxillin contains LD motifs, LIM domains, and an SH3- and SH2-binding domain that participate in a variety of protein-protein interactions with kinases, GTPase-activating proteins, and cytoskeletal proteins. Phosphorylation of paxillin occurs at both tyrosine and serine sites. Tyrosine phosphorylation of paxillin occurs in response to growth factors, neuropeptides, and integrins. The major sites of tyrosine phosphorylation include Tyr-31 and Tyr-118. Both of these sites may be involved in Crk binding to paxillin during integrin-mediated cell adhesion. These sites may provide docking motifs for recruitment of other signaling molecules to focal adhesions.

Images

Western blot analysis of A431 cells (30 µg/lane) serum starved overnight (lane 1 & 3) or treated with pervanadate (1 mM) for 30 min (lanes 2 & 4). The blot was probed with mouse monoclonal anti-Paxillin (PM1071) (lanes 1 & 2) and rabbit polyclonal anti-phospho-Paxillin (Tyr-118) (AN1889) (lanes 3 & 4).



Please note: All products are 'FOR RESEARCH USE ONLY. NOT FOR USE IN DIAGNOSTIC OR THERAPEUTIC PROCEDURES'.