

Anti-Plexin B1 (C-terminal region) Antibody

Catalog # AN1914

Product Information

Application	WB, ICC
Primary Accession	O43157
Host	Rabbit
Clonality	Rabbit Polyclonal
Isotype	IgG
Calculated MW	232298

Additional Information

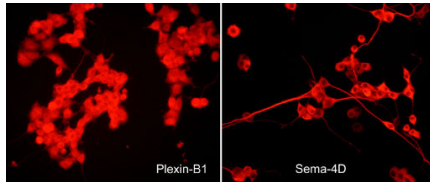
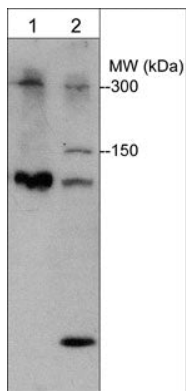
Gene ID	5364
Other Names	Sema4D, CD100
Dilution	WB~~1:1000 ICC~~N/A
Storage	Maintain refrigerated at 2-8°C for up to 6 months. For long term storage store at -20°C in small aliquots to prevent freeze-thaw cycles.
Precautions	Anti-Plexin B1 (C-terminal region) Antibody is for research use only and not for use in diagnostic or therapeutic procedures.
Shipping	Blue Ice

Background

Plexins are a family of large integral membrane proteins that complex with neuropilins to form semaphorin co-receptors. The extracellular region of plexins contains a semaphorin domain, multiple glycine-rich motifs, and MET-related sequences. The cytoplasmic region contains a Sex/Plexin domain and putative tyrosine phosphorylation sites that mediate signal transduction after activation. In addition, Plexin B1 and B2 contain cleavage sites for subtilisin-like proprotein convertases. These cleavage sites may be important for regulating assembly of heterodimeric receptors or release of the extracellular domain. Plexin-B1 is expressed as a 300 kDa precursor protein that can be cleaved into a 200 kDa a-subunit and a 100 kDa b-subunit. This plexin is the receptor for the class IV semaphorin, Sema-4D. Sema-4D activation of Plexin B1 recruits and activates c-Met, which can promote cell survival, migration, and angiogenesis

Images

Western blot of mouse liver (lane 1) and rat PC12 cells (lane 2). The blot was probed with rabbit polyclonal Plexin B1 antibody (AN1914) at a dilution of 1:1000.



Immunocytochemical labeling in rat PC12 cells differentiated with NGF. The cells were probed with rabbit polyclonal Plexin B1 (AN1914) and mouse monoclonal Sema-4D (SM1881) antibodies, then the antibodies were detected using appropriate secondary antibody conjugated to DyLight® 594.

Please note: All products are 'FOR RESEARCH USE ONLY. NOT FOR USE IN DIAGNOSTIC OR THERAPEUTIC PROCEDURES'.