

Anti-PTP1B (Tyr-152), Phosphospecific Antibody

Catalog # AN1927

Product Information

Application	WB
Primary Accession	P18031
Host	Rabbit
Clonality	Rabbit Polyclonal
Isotype	IgG
Calculated MW	49967

Additional Information

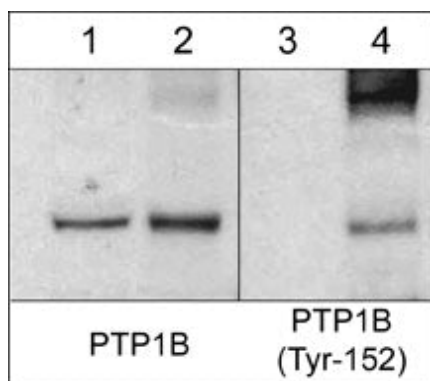
Gene ID	5770
Other Names	PTPN1; TCPTP/PTPN2
Dilution	WB~~1:1000
Storage	Maintain refrigerated at 2-8°C for up to 6 months. For long term storage store at -20°C in small aliquots to prevent freeze-thaw cycles.
Precautions	Anti-PTP1B (Tyr-152), Phosphospecific Antibody is for research use only and not for use in diagnostic or therapeutic procedures.
Shipping	Blue Ice

Background

PTP1B is a nonreceptor type protein tyrosine phosphatase that has essential roles in insulin and leptin signaling, as well as important functions in growth factor and integrin signaling. The structure of PTP1B includes a conserved phosphatase domain, C-terminal hydrophobic residues for targeting to the cytoplasmic face of the endoplasmic reticulum, and proline-rich regions characteristic of SH3 domain binding motifs. PTP1B can interact with N-Cadherin and dephosphorylate β -catenin associated with cadherin complexes. PTP1B also interacts with Insulin and EGF receptors, and undergoes phosphorylation after receptor stimulation. Tyrosine phosphorylation at Tyr-66, Tyr-152, and Tyr-153 occurs after insulin receptor activation, and tyrosine phosphorylation of Tyr-152 may be required for interactions with N-Cadherin. In addition, Akt can phosphorylate Ser-50 and this phosphorylation can reduce PTP1B activity.

Images

Western blot image of mouse SYF cSrc-transformed cells untreated (lanes 1 & 3) or treated (lanes 2 & 4) with pervanadate (1 mM for 30 min.). The blots were probed with rabbit polyclonal anti-PTP1B (a.a. 146-157) (lanes 1 & 2) or anti-PTP1B (Tyr-152) (lanes 3 & 4).



Please note: All products are 'FOR RESEARCH USE ONLY. NOT FOR USE IN DIAGNOSTIC OR THERAPEUTIC PROCEDURES'.