

# Anti-Sox2 (Lys-119), methyl-specific Antibody

Catalog # AN1964

## Product Information

---

<b>Application</b>	WB, ICC
<b>Primary Accession</b>	<a href="#">P48432</a>
<b>Reactivity</b>	Rat
<b>Host</b>	Rabbit
<b>Clonality</b>	Rabbit Polyclonal
<b>Isotype</b>	IgG
<b>Calculated MW</b>	34454

## Additional Information

---

<b>Gene ID</b>	20674
<b>Other Names</b>	SRY (sex determining region Y) box-2, ANOP3, MCOPS3, SOX-2
<b>Dilution</b>	WB~~1:1000 ICC~~N/A
<b>Storage</b>	Maintain refrigerated at 2-8°C for up to 6 months. For long term storage store at -20°C in small aliquots to prevent freeze-thaw cycles.
<b>Precautions</b>	Anti-Sox2 (Lys-119), methyl-specific Antibody is for research use only and not for use in diagnostic or therapeutic procedures.
<b>Shipping</b>	Blue Ice

## Background

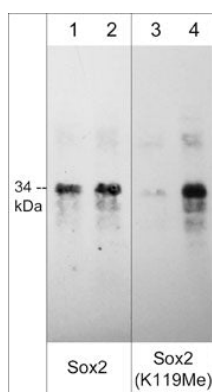
---

Embryonic stem cells can maintain a pluripotent state that is controlled by a set of transcription factors that include Oct-4, Sox2, and Nanog. Chromatin immunoprecipitation experiments show that Sox2 and Oct-4 bind to thousands of gene regulatory sites, many of which regulate cell pluripotency and early embryonic development. siRNA knockdown of either Sox2 or Oct-4 results in loss of pluripotency, while overexpression of Oct-4 and Sox2, along with additional transcription factors Klf4 and c-Myc, can reprogram somatic cells to a pluripotent state. Sox2 also regulates adult multipotent progenitors in various epithelial tissues, and may be important for survival and regeneration of these tissues. The activity of Sox2 may be regulated by phosphorylation and methylation. Akt1 phosphorylates Thr-118 and enhances Sox2 transcriptional activity, while Set7 can monomethylate Lys-119 leading to inhibition of Sox2 transcriptional activity, as well as Sox2 ubiquitination and degradation. In addition, Sox2 Thr-128 is constitutively phosphorylated in the F9 mouse stem cell line.

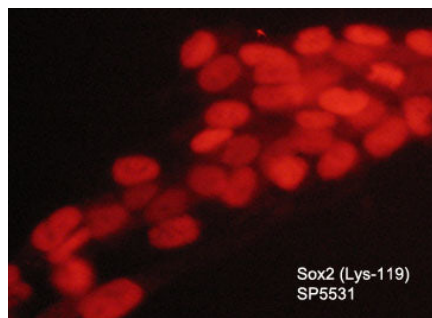
## Images

---

Western blot image of human Sox2 recombinant protein untreated (lanes 1 & 3) or treated with Set7 methyltransferase to methylate Lys-119 (lanes 2 & 4). The



blot was probed with mouse monoclonal Sox2 (lanes 1 & 2) and rabbit polyclonal anti-Sox2 (Lys-119) methyl-specific antibody (lanes 3 & 4).



Immunocytochemical labeling of methylated Sox2 in aldehyde fixed and NP-40 permeabilized human NCI-H446 lung carcinoma cells. The cells were labeled with rabbit polyclonal anti-Sox2 (Lys-119) methyl-specific (AN1964). The antibody was detected using goat anti-rabbit DyLight® 594.

Please note: All products are 'FOR RESEARCH USE ONLY. NOT FOR USE IN DIAGNOSTIC OR THERAPEUTIC PROCEDURES'.