

# Anti-c-Src (Tyr-530) [conserved site], Phosphospecific Antibody

Catalog # AN1976

## Product Information

---

<b>Application</b>	WB
<b>Primary Accession</b>	<a href="#">P12931</a>
<b>Host</b>	Mouse
<b>Clonality</b>	Mouse Monoclonal
<b>Isotype</b>	IgG1
<b>Clone Names</b>	M261
<b>Calculated MW</b>	59835

## Additional Information

---

<b>Gene ID</b>	6714
<b>Other Names</b>	Src
<b>Dilution</b>	WB~~1:1000
<b>Storage</b>	Maintain refrigerated at 2-8°C for up to 6 months. For long term storage store at -20°C in small aliquots to prevent freeze-thaw cycles.
<b>Precautions</b>	Anti-c-Src (Tyr-530) [conserved site], Phosphospecific Antibody is for research use only and not for use in diagnostic or therapeutic procedures.
<b>Shipping</b>	Blue Ice

## Background

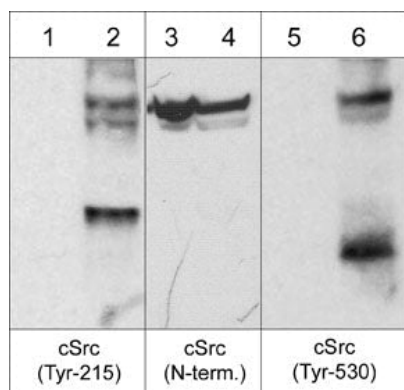
---

c-Src was the first proto-oncogenic non-receptor tyrosine kinase characterized in human. The Src family is composed of nine members in vertebrates, including c-Src, Yes, Fgr, Yrk, Fyn, Lyn, Hck, Lck, and Blk. Src-family kinases transduce signals that are involved in the control of a variety of cellular processes, including proliferation, differentiation, motility, and adhesion. Src-family kinases contain an N-terminal cell membrane anchor followed by SH3 and SH2 domains. The activity of c-Src is regulated by tyrosine phosphorylation at multiple sites. Tyrosine 418 is autophosphorylated following c-Src activation. Tyrosine 215 in the SH2 domain of c-Src is phosphorylated following growth factor receptor activation. Both Tyr-215 and Tyr-418 phosphorylation increases tyrosine kinase activity, while phosphorylation of Tyr-530 downregulates c-Src kinase activity. Thus, tyrosine phosphorylation of c-Src is critical for regulating its kinase activity.

## Images

---

Western blot analysis of mouse SYF cells transformed with c-Src then left untreated (lanes 1, 3, & 5) or treated



with pervanadate (1 mM) for 30 minutes (lanes 2, 4, & 6). The blot was probed with anti-c-Src (Tyr-215) (lanes 1 & 2), anti-c-Src (N-terminal region) (lanes 3 & 4), and anti-c-Src (Tyr-530) (lanes 5 & 6).

Please note: All products are 'FOR RESEARCH USE ONLY. NOT FOR USE IN DIAGNOSTIC OR THERAPEUTIC PROCEDURES'.