

Anti-Syk (Central region) Antibody

Catalog # AN1982

Product Information

Application	WB
Primary Accession	P43405
Host	Mouse
Clonality	Mouse Monoclonal
Isotype	IgG1
Clone Names	M373
Calculated MW	72066

Additional Information

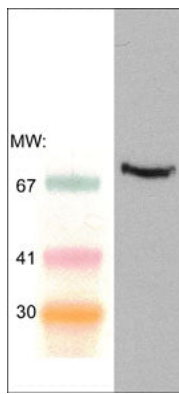
Gene ID	6850
Other Names	Tyrosine-protein kinase SYK, Spleen tyrosine kinase, p72-Syk
Dilution	WB~~1:1000
Storage	Maintain refrigerated at 2-8°C for up to 6 months. For long term storage store at -20°C in small aliquots to prevent freeze-thaw cycles.
Precautions	Anti-Syk (Central region) Antibody is for research use only and not for use in diagnostic or therapeutic procedures.
Shipping	Blue Ice

Background

Syk is a member of the family of non-receptor type protein-tyrosine kinases and plays a crucial role in lymphocyte signaling and development. Syk is expressed in all hematopoietic cells and contributes to the signal transduction process by binding to a tyrosine-based activation motif (ITAM) of immune receptors, including Igα, TCRζ, CD3ε, FcεRIβ, and FcεRIγ. Upon receptor activation, Syk binds to phosphorylated ITAMs via its two N-terminal SH2 domains, thereby activating Syk and causing tyrosines in Syk to undergo auto-phosphorylation or phosphorylation. These phosphorylated sites can act as binding sites for other signaling molecules or help to regulate enzymatic activity. For example, in mast cells, Syk can activate downstream targets such as phospholipase Cy1 and VAV. Studies in Syk^{-/-} mast cells identified defects in both the ERK-MAP and JNK-MAP kinase pathways.

Images

Western blot of adult mouse spleen lysate. The blot was probed with mouse monoclonal anti-Syk (Central region) antibody at 1:250.



Please note: All products are 'FOR RESEARCH USE ONLY. NOT FOR USE IN DIAGNOSTIC OR THERAPEUTIC PROCEDURES'.