

# Anti-Trop-2/TACSTD2 (Extracellular region) Antibody

Catalog # AN1988

## Product Information

---

<b>Application</b>	WB, ICC, IP
<b>Primary Accession</b>	<a href="#">P09758</a>
<b>Host</b>	Mouse
<b>Clonality</b>	Mouse Monoclonal
<b>Isotype</b>	IgG1
<b>Clone Names</b>	M005
<b>Calculated MW</b>	35709

## Additional Information

---

<b>Gene ID</b>	4070
<b>Other Names</b>	Tumor-associated calcium signal transducer 2; Trop-2; Membrane component chromosome 1 surface marker 1; GA733-1; TACSTD2; M1S1; TROP2
<b>Dilution</b>	WB~~1:1000 ICC~~N/A IP~~N/A
<b>Storage</b>	Maintain refrigerated at 2-8°C for up to 6 months. For long term storage store at -20°C in small aliquots to prevent freeze-thaw cycles.
<b>Precautions</b>	Anti-Trop-2/TACSTD2 (Extracellular region) Antibody is for research use only and not for use in diagnostic or therapeutic procedures.
<b>Shipping</b>	Blue Ice

## Background

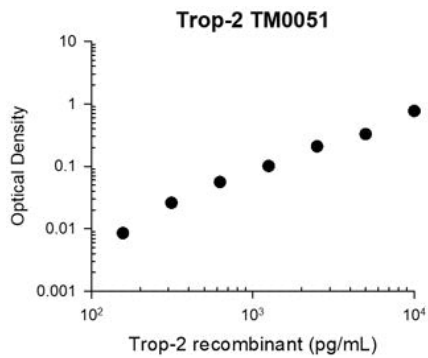
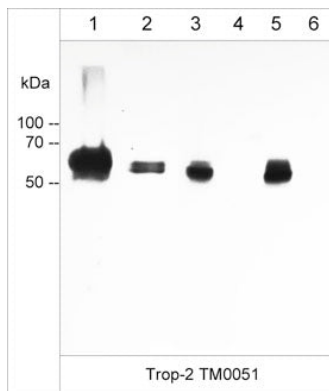
---

Trop-2 (TACSTD2) is a transmembrane glycoprotein found on invasive trophoblast cells and in several epithelial type cancer cells. Trop-2 has an extracellular domain with EGF thyroglobulin type-1 repeats, a transmembrane domain and a short cytoplasmic tail with a HIKE domain containing a PIP2 binding site. This glycoprotein functions in many signaling pathways including interaction of its extracellular domain with integrin  $\beta$ 1 to regulate FAK signaling, interaction of its transmembrane domain with claudin 1 and claudin 7 during tight junction formation, and regulation of intracellular calcium release by its PIP2 binding and activation of the ERK/MAPK pathway. These Trop-2 functions may be important during tumor proliferation, metastasis and invasion.

## Images

---

Immunocytochemical labeling of Trop-2 in paraformaldehyde fixed human A431 cells. The cells were labeled with mouse monoclonal anti-Trop-2 (clone M005). The antibody was detected using goat anti-mouse DyLight® 594.



Representative Standard Curve using mouse monoclonal anti-Trop-2 (AN1988) for ELISA capture of human recombinant Trop-2 extracellular region with His-tag. Capture was detected by using an anti-His-tag antibody followed by appropriate secondary antibody conjugated to HRP.

Please note: All products are 'FOR RESEARCH USE ONLY. NOT FOR USE IN DIAGNOSTIC OR THERAPEUTIC PROCEDURES'.