

Anti- α 6-Tubulin (central region) Antibody

Catalog # AN1999

Product Information

Application	WB
Primary Accession	Q9BQE3
Reactivity	Rat
Host	Rabbit
Clonality	Rabbit Polyclonal
Isotype	IgG
Calculated MW	49895

Additional Information

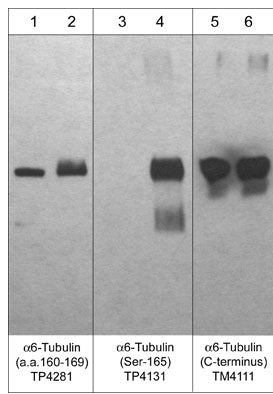
Gene ID	84790
Other Names	alpha 6 Tubulin, Tubulin A6
Dilution	WB~~1:1000
Storage	Maintain refrigerated at 2-8°C for up to 6 months. For long term storage store at -20°C in small aliquots to prevent freeze-thaw cycles.
Precautions	Anti- α 6-Tubulin (central region) Antibody is for research use only and not for use in diagnostic or therapeutic procedures.
Shipping	Blue Ice

Background

Microtubules (MTs) are cytoskeletal elements that play an essential role in cell division and cytoplasmic organization. MTs are dynamic polymers of α / β -Tubulin heterodimers. At least two populations of MTs, called dynamic and stable according to their rates of turnover, are readily distinguishable in cells. The proteins associated with MTs (MAPs) are among the best-known factors that regulate MT dynamics and stability. In addition, a variety of different post-translational modifications may also regulate MT dynamics and stability. Phosphorylation is one of these modifications and it can occur on serine, threonine, and tyrosine residues in α - and β -Tubulin isoforms. Multiple kinases can phosphorylate Ser-444 at the C-terminus of β III-Tubulin in vitro, and unphosphorylated Ser-444 may be an early marker for cells of neuronal lineage. Cdk1 can phosphorylate Ser-172 in β -Tubulin during mitosis and this may impair tubulin incorporation into microtubules. In α -tubulin, PKC can phosphorylate Ser-165 leading to increased cell motility in human breast cells.

Images

Western blot analysis of 250 ng/lane of α 1-Tubulin unphosphorylated (lanes 1, 3, & 5) or phosphorylated at Ser-165 with PKC α (lanes 2, 4, & 6). The blots were probed



with anti- $\alpha 6$ -Tubulin (a.a. 160-169) (AN1999; lanes 1 & 2), anti- $\alpha 6$ -Tubulin (Ser-165) (TP4131; lanes 3 & 4), and anti- α -Tubulin (C-terminus) (TM4111; lanes 5 & 6).

Please note: All products are 'FOR RESEARCH USE ONLY. NOT FOR USE IN DIAGNOSTIC OR THERAPEUTIC PROCEDURES'.