

# Anti- $\beta$ III-Tubulin Antibody

Catalog # AN2005

## Product Information

---

<b>Application</b>	WB, ICC
<b>Primary Accession</b>	<a href="#">Q13509</a>
<b>Host</b>	Rabbit
<b>Clonality</b>	Rabbit Polyclonal
<b>Isotype</b>	IgG
<b>Calculated MW</b>	50433

## Additional Information

---

<b>Gene ID</b>	10381
<b>Other Names</b>	TUBB3
<b>Dilution</b>	WB~~1:1000 ICC~~N/A
<b>Storage</b>	Maintain refrigerated at 2-8°C for up to 6 months. For long term storage store at -20°C in small aliquots to prevent freeze-thaw cycles.
<b>Precautions</b>	Anti- $\beta$ III-Tubulin Antibody is for research use only and not for use in diagnostic or therapeutic procedures.
<b>Shipping</b>	Blue Ice

## Background

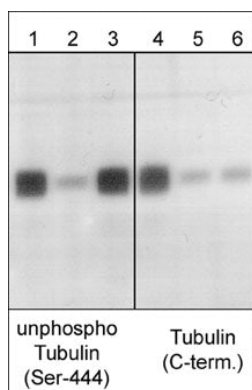
---

Microtubules (MTs) are cytoskeletal elements that play an essential role in cell division and cytoplasmic organization. MTs are dynamic polymers of  $\alpha/\beta$ -tubulin heterodimers. At least two populations of MTs, called dynamic and stable according to their rates of turnover, are readily distinguishable in cells. The proteins associated with MTs (MAPs) are among the best-known factors that regulate MT dynamics and stability. In addition, a variety of different post-translational modifications may also regulate MT dynamics and stability. Phosphorylation is one of these modifications and it can occur on serine, threonine, and tyrosine residues in  $\beta$ -Tubulin isoforms. Multiple kinases can phosphorylate Ser-444 at the C-terminus of  $\beta$ III-Tubulin in vitro. Unphosphorylated Ser-444 in  $\beta$ III-Tubulin is an early marker for cells of neuronal lineage, while phosphorylation of Ser-444 is upregulated after neuronal maturation and may preferentially occur in assembled MTs. By contrast, Cdk1 phosphorylation of Ser-172 in  $\beta$ -Tubulin occurs in mitotic cells and may impair tubulin incorporation into microtubules.

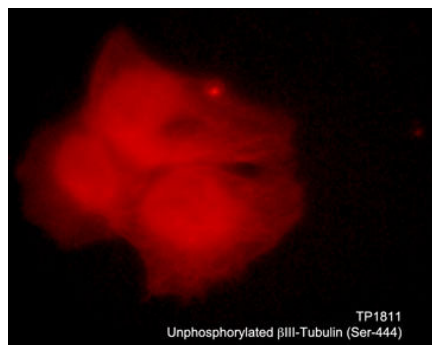
## Images

---

Western blot analysis of mouse brain. The blot was probed with anti-unphosphorylated  $\beta$ III-Tubulin (Ser-444) (lanes 1-3) and anti- $\beta$ III-Tubulin (C-terminus) (lanes 4-6) polyclonal antibodies. Both antibodies were used in the



presence of unphosphorylated  $\beta$ III-Tubulin (Ser-444) peptide (lanes 2 & 5; TX1815) and phospho- $\beta$ III-Tubulin (Ser-444) peptide (lanes 3 & 6; TX1695).



Immunocytochemical labeling of  $\beta$ -tubulin in aldehyde fixed and NP-40 permeabilized human NCI-H1299 lung carcinoma cells. The cells were labeled with rabbit polyclonal anti-unphosphorylated  $\beta$ -Tubulin (AN2005). The antibody was detected using goat anti-rabbit DyLight® 594.

Please note: All products are 'FOR RESEARCH USE ONLY. NOT FOR USE IN DIAGNOSTIC OR THERAPEUTIC PROCEDURES'.