

IL-16 Antibody

Purified Mouse Monoclonal Antibody

Catalog # AO1012a

Product Information

Application	WB, E
Primary Accession	Q14005
Reactivity	Human
Host	Mouse
Clonality	Monoclonal
Clone Names	5D8
Isotype	IgG1
Calculated MW	141752
Description	Interleukin-16, also known as lymphocyte chemoattractant factor (LCF), is a chemotactic cytokine that stimulates a migratory response in CD4+ lymphocytes, monocytes, and eosinophils through binding to the CD4 receptor . IL-16 induces human T-lymphocyte expression of interleukin 2 receptor and upregulates major histocompatibility complex II molecules on resting human T lymphocyte. It is able to render CD4+ T cells unresponsive to TCR/CD3 stimuli. Moreover, IL-16 inhibits the replication of T cell and monocyte tropic HIV strains in vitro.
Immunogen	Purified recombinant fragment of human IL-16 expressed in E. Coli.
Formulation	Ascitic fluid containing 0.03% sodium azide.

Additional Information

Gene ID	3603
Other Names	Pro-interleukin-16, Interleukin-16, IL-16, Lymphocyte chemoattractant factor, LCF, IL16
Dilution	WB~~1/500 - 1/2000 E~~N/A
Storage	Maintain refrigerated at 2-8°C for up to 6 months. For long term storage store at -20°C in small aliquots to prevent freeze-thaw cycles.
Precautions	IL-16 Antibody is for research use only and not for use in diagnostic or therapeutic procedures.

Protein Information

Name	IL16
-------------	------

Function	Interleukin-16 stimulates a migratory response in CD4+ lymphocytes, monocytes, and eosinophils. Primes CD4+ T-cells for IL-2 and IL-15 responsiveness. Also induces T-lymphocyte expression of interleukin 2 receptor. Ligand for CD4. Isoform 3 is involved in cell cycle progression in T-cells. Appears to be involved in transcriptional regulation of SKP2 and is probably part of a transcriptional repression complex on the core promoter of the SKP2 gene. May act as a scaffold for GABPB1 (the DNA-binding subunit of the GABP transcription factor complex) and HDAC3 thus maintaining transcriptional repression and blocking cell cycle progression in resting T-cells.
Cellular Location	[Interleukin-16]: Secreted. [Isoform 3]: Cytoplasm. Nucleus.
Tissue Location	[Isoform 3]: Expressed in hemopoietic tissues, such as resting T-cells, but undetectable during active T-cell proliferation

References

1. Cruikshank, W.W. et al 1994. Proc. Nat. Acad. Sci. 91: 5109-5113.

Images

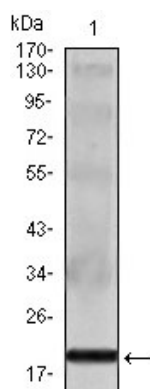


Figure 1: Western blot analysis using IL16 mouse mAb against IL16 recombinant protein.

Please note: All products are 'FOR RESEARCH USE ONLY. NOT FOR USE IN DIAGNOSTIC OR THERAPEUTIC PROCEDURES'.