

IL-6 Antibody

Purified Mouse Monoclonal Antibody

Catalog # AO1021a

Product Information

Application	WB, E
Primary Accession	P05231
Reactivity	Human
Host	Mouse
Clonality	Monoclonal
Clone Names	6D9A1; 6C12B1
Isotype	IgG1
Calculated MW	23718
Description	Interleukine 6 (IL-6) is a cytokine produced primarily by stimulated monocytes, fibroblasts and epithelial cells. It has a wide variety of biological functions through activating a cell surface signaling assembly composed of IL6, IL6RA, and the shared signaling receptor gp130. The cytokine plays an essential role in the final differentiation of b-cells into Igsecreting cells, and induces myeloma, plasmacytoma growth, nerve cells differentiations. In addition, IL-6 is an important regulator of acute phase reaction.
Immunogen	Purified recombinant fragment of human IL-6 expressed in E. Coli.
Formulation	Ascitic fluid containing 0.03% sodium azide.

Additional Information

Gene ID	3569
Other Names	Interleukin-6, IL-6, B-cell stimulatory factor 2, BSF-2, CTL differentiation factor, CDF, Hybridoma growth factor, Interferon beta-2, IFN-beta-2, IL6, IFNB2
Dilution	WB~~1/500 - 1/2000 E~~N/A
Storage	Maintain refrigerated at 2-8°C for up to 6 months. For long term storage store at -20°C in small aliquots to prevent freeze-thaw cycles.
Precautions	IL-6 Antibody is for research use only and not for use in diagnostic or therapeutic procedures.

Protein Information

Name	IL6 (HGNC:6018)
Synonyms	IFNB2

Function	Cytokine with a wide variety of biological functions in immunity, tissue regeneration, and metabolism. Binds to IL6R, then the complex associates to the signaling subunit IL6ST/gp130 to trigger the intracellular IL6-signaling pathway (Probable). The interaction with the membrane-bound IL6R and IL6ST stimulates 'classic signaling', whereas the binding of IL6 and soluble IL6R to IL6ST stimulates 'trans- signaling'. Alternatively, 'cluster signaling' occurs when membrane- bound IL6:IL6R complexes on transmitter cells activate IL6ST receptors on neighboring receiver cells (Probable).
Cellular Location	Secreted.
Tissue Location	Produced by skeletal muscle.

References

1. Ota, N. et al. 2001. J. Hum. Genet. 46: 267-272.

Images

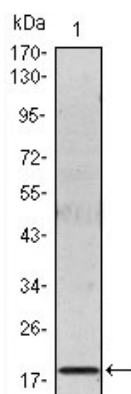


Figure 1: Western blot analysis using IL6 mouse mAb against IL6 recombinant protein.

Please note: All products are 'FOR RESEARCH USE ONLY. NOT FOR USE IN DIAGNOSTIC OR THERAPEUTIC PROCEDURES'.