

# CD10 Antibody

Purified Mouse Monoclonal Antibody

Catalog # AO1022a

## Product Information

---

<b>Application</b>	IHC, E
<b>Primary Accession</b>	<a href="#">P08473</a>
<b>Reactivity</b>	Human
<b>Host</b>	Mouse
<b>Clonality</b>	Monoclonal
<b>Clone Names</b>	2A1H5E1
<b>Isotype</b>	IgG2b
<b>Calculated MW</b>	85514
<b>Description</b>	CD10 is a 100kDa glycoprotein, also designated Common Acute Lymphocytic Leukemia Antigen (CALLA). It is a cell surface enzyme with neutral metalloendopeptidase activity which inactivates a variety of biologically active peptides. CD10 is expressed on the cells of lymphoblastic, Burkitt's, and follicular germinal center lymphomas, and on cells from patients with chronic myelocytic leukemia (CML). It is also expressed on the surface of normal early lymphoid progenitor cells, immature B cells within adult bone marrow and germinal center B cells within lymphoid tissue. CD10 is also present on breast myoepithelial cells, bile canaliculi, fibroblasts, with especially high expression on the brush border of kidney and gut epithelial cells.
<b>Immunogen</b>	Purified recombinant fragment of human CD-10 expressed in E. Coli.
<b>Formulation</b>	Purified antibody in PBS containing 0.03% sodium azide.

## Additional Information

---

<b>Gene ID</b>	4311
<b>Other Names</b>	Neprilysin, 3.4.24.11, Atriopeptidase, Common acute lymphocytic leukemia antigen, CALLA, Enkephalinase, Neutral endopeptidase 24.11, NEP, Neutral endopeptidase, Skin fibroblast elastase, SFE, CD10, MME, EPN
<b>Dilution</b>	IHC~~1/200 - 1/1000 E~~N/A
<b>Storage</b>	Maintain refrigerated at 2-8°C for up to 6 months. For long term storage store at -20°C in small aliquots to prevent freeze-thaw cycles.
<b>Precautions</b>	CD10 Antibody is for research use only and not for use in diagnostic or therapeutic procedures.

## Protein Information

---

<b>Name</b>	MME {ECO:0000303 PubMed:27588448, ECO:0000312 HGNC:HGNC:7154}
<b>Function</b>	Thermolysin-like specificity, but is almost confined on acting on polypeptides of up to 30 amino acids (PubMed: <a href="#">15283675</a> , PubMed: <a href="#">6208535</a> , PubMed: <a href="#">6349683</a> , PubMed: <a href="#">8168535</a> ). Biologically important in the destruction of opioid peptides such as Met- and Leu-enkephalins by cleavage of a Gly-Phe bond (PubMed: <a href="#">17101991</a> , PubMed: <a href="#">6349683</a> ). Catalyzes cleavage of bradykinin, substance P and neurotensin peptides (PubMed: <a href="#">6208535</a> ). Able to cleave angiotensin-1, angiotensin-2 and angiotensin 1-9 (PubMed: <a href="#">15283675</a> , PubMed: <a href="#">6349683</a> ). Involved in the degradation of atrial natriuretic factor (ANF) and brain natriuretic factor (BNP(1-32)) (PubMed: <a href="#">16254193</a> , PubMed: <a href="#">2531377</a> , PubMed: <a href="#">2972276</a> ). Displays UV-inducible elastase activity toward skin preelastic and elastic fibers (PubMed: <a href="#">20876573</a> ).
<b>Cellular Location</b>	Cell membrane; Single-pass type II membrane protein

## References

1 . Sato Y,et.al. Journal of Gastroenterology,1996 Feb.31(1):12-7. 2 . Inukai T,et.al. British Journal of Haematology,1995,89(3):623-6.

## Images

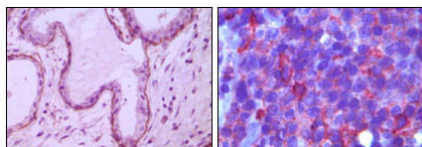


Figure 1: Immunohistochemical analysis of paraffin-embedded human breast ductal myoepithelium (A) and lymph tissue (B), showing cytoplasmic (A) and membrane (B) localization using CD10 mouse mAb with DAB staining (A) and AEC staining (B).

Please note: All products are 'FOR RESEARCH USE ONLY. NOT FOR USE IN DIAGNOSTIC OR THERAPEUTIC PROCEDURES'.