

MLL Antibody

Purified Mouse Monoclonal Antibody

Catalog # AO1149a

Product Information

Application	WB, IHC, E
Primary Accession	Q03164
Reactivity	Human
Host	Mouse
Clonality	Monoclonal
Clone Names	10F8D7
Isotype	IgG1
Calculated MW	431764
Description	Myeloid/lymphoid or mixed-lineage leukemia (trithorax homolog, Drosophila). Eukaryotic RNA polymerase II mediates the synthesis of mature and functional messenger RNA. This is a multistep process, called the transcription cycle, that includes five stages: preinitiation, promoter, clearance, elongation and termination. Elongation is thought to be a critical stage for the regulation of gene expression. ELL (11-19 lysine-rich leukemia protein, also designated MEN) functions as an RNA polymerase II elongation factor that increases the rate of transcription by suppressing transient pausing by RNA polymerase II. Also, ELL is thought to regulate cellular proliferation. ELL is abundantly expressed in peripheral blood leukocytes, skeletal muscle, placenta and testis, and has lower expression in spleen, thymus, heart, brain, lung, kidney, liver and ovary. The gene encoding human ELL, which maps to chromosome 19p13.1, is one of several genes which undergo translocation with the MLL gene on chromosome 11q23 in acute myeloid leukemia. MLL (myeloid/lymphoid leukemia, also designated ALL-1 and HRX) is a 430 kDa protein that regulates embryonal and hematopoietic development.
Immunogen	Purified recombinant fragment of MLL (aa3751-3968) expressed in E. Coli.
Formulation	Ascitic fluid containing 0.03% sodium azide.

Additional Information

Gene ID	4297
Other Names	Histone-lysine N-methyltransferase 2A, Lysine N-methyltransferase 2A, 2.1.1.43, ALL-1, CXXC-type zinc finger protein 7, Myeloid/lymphoid or mixed-lineage leukemia, Myeloid/lymphoid or mixed-lineage leukemia protein 1, Trithorax-like protein, Zinc finger protein HRX, MLL cleavage product N320, N-terminal cleavage product of 320 kDa, p320, MLL cleavage product C180, C-terminal cleavage product of 180 kDa, p180, KMT2A, ALL1, CXXC7, HRX, HTRX, MLL, MLL1, TRX1
Dilution	WB~~1/500 - 1/2000 IHC~~1/200 - 1/1000 E~~N/A

Storage	Maintain refrigerated at 2-8°C for up to 6 months. For long term storage store at -20°C in small aliquots to prevent freeze-thaw cycles.
Precautions	MLL Antibody is for research use only and not for use in diagnostic or therapeutic procedures.

Protein Information

Name	KMT2A
Synonyms	ALL1, CXXC7, HRX, HTRX, MLL, MLL1, TRX1
Function	<p>Histone methyltransferase that plays an essential role in early development and hematopoiesis (PubMed:12453419, PubMed:15960975, PubMed:19187761, PubMed:19556245, PubMed:20677832, PubMed:21220120, PubMed:26886794). Catalytic subunit of the MLL1/MLL complex, a multiprotein complex that mediates both methylation of 'Lys-4' of histone H3 (H3K4me) complex and acetylation of 'Lys-16' of histone H4 (H4K16ac) (PubMed:12453419, PubMed:15960975, PubMed:19187761, PubMed:19556245, PubMed:20677832, PubMed:21220120, PubMed:24235145, PubMed:26886794). Catalyzes methyl group transfer from S-adenosyl-L- methionine to the epsilon-amino group of 'Lys-4' of histone H3 (H3K4) via a non-processive mechanism. Part of chromatin remodeling machinery predominantly forms H3K4me1 and H3K4me2 methylation marks at active chromatin sites where transcription and DNA repair take place (PubMed:12453419, PubMed:15960975, PubMed:19187761, PubMed:19556245, PubMed:20677832, PubMed:21220120, PubMed:25561738, PubMed:26886794). Has weak methyltransferase activity by itself, and requires other component of the MLL1/MLL complex to obtain full methyltransferase activity (PubMed:19187761, PubMed:26886794). Has no activity toward histone H3 phosphorylated on 'Thr-3', less activity toward H3 dimethylated on 'Arg-8' or 'Lys-9', while it has higher activity toward H3 acetylated on 'Lys-9' (PubMed:19187761). Binds to unmethylated CpG elements in the promoter of target genes and helps maintain them in the nonmethylated state (PubMed:20010842). Required for transcriptional activation of HOXA9 (PubMed:12453419, PubMed:20010842, PubMed:20677832). Promotes PPP1R15A-induced apoptosis (PubMed:10490642). Plays a critical role in the control of circadian gene expression and is essential for the transcriptional activation mediated by the CLOCK-BMAL1 heterodimer (By similarity). Establishes a permissive chromatin state for circadian transcription by mediating a rhythmic methylation of 'Lys-4' of histone H3 (H3K4me) and this histone modification directs the circadian acetylation at H3K9 and H3K14 allowing the recruitment of CLOCK-BMAL1 to chromatin (By similarity). Also has auto-methylation activity on Cys-3882 in absence of histone H3 substrate (PubMed:24235145).</p>
Cellular Location	Nucleus [MLL cleavage product C180]: Nucleus. Note=Localizes to a diffuse nuclear pattern when not associated with MLL cleavage product N320
Tissue Location	Heart, lung, brain and T- and B-lymphocytes.

References

1. Genet Couns. 2006;17(2):155-9. 2. Cancer Genet Cytogenet. 2006 Jul 15;168(2):162-7 3. Leukemia. 2007 Feb;21(2):360-2. Epub 2007 Jan 4.

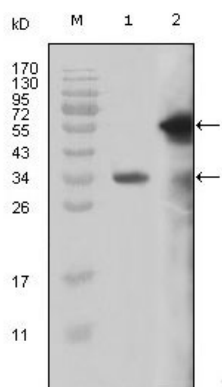


Figure 1: Western blot analysis using MLL mouse mAb against truncated MLL recombinant protein (1) and truncated GFP-MLL(aa3714-3969) transfected Cos7 cell lysate (2).

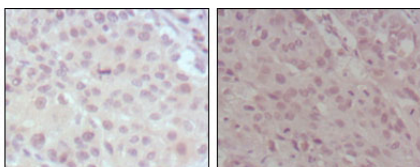


Figure 2: Immunohistochemical analysis of paraffin-embedded human lung cancer (left) and esophagus cancer (right), showing nuclear weak staining with DAB staining using MLL mouse mAb.

Please note: All products are 'FOR RESEARCH USE ONLY. NOT FOR USE IN DIAGNOSTIC OR THERAPEUTIC PROCEDURES'.