

CD10 Antibody

Purified Mouse Monoclonal Antibody
Catalog # AO1209a

Product Information

| | |
|--------------------------|--|
| Application | WB, IHC, E |
| Primary Accession | P08473 |
| Reactivity | Human |
| Host | Mouse |
| Clonality | Monoclonal |
| Clone Names | 3G9D10 |
| Isotype | IgG1 |
| Calculated MW | 85514 Da |
| Description | CD10(MME): membrane metallo-endoropeptidase. This gene encodes a common acute lymphocytic leukemia antigen that is an important cell surface marker in the diagnosis of human acute lymphocytic leukemia (ALL). This protein is present on leukemic cells of pre-B phenotype, which represent 85% of cases of ALL. This protein is not restricted to leukemic cells, however, and is found on a variety of normal tissues. It is a glycoprotein that is particularly abundant in kidney, where it is present on the brush border of proximal tubules and on glomerular epithelium. The protein is a neutral endopeptidase that cleaves peptides at the amino side of hydrophobic residues and inactivates several peptide hormones including glucagon, enkephalins, substance P, neurotensin, oxytocin, and bradykinin. This gene, which encodes a 100-kD type II transmembrane glycoprotein, exists in a single copy of greater than 45 kb. The 5' untranslated region of this gene is alternatively spliced, resulting in four separate mRNA transcripts. The coding region is not affected by alternative splicing. |
| Immunogen | Purified recombinant fragment of CD10 expressed in E. Coli. |
| Formulation | Ascitic fluid containing 0.03% sodium azide. |

Additional Information

| | |
|--------------------|---|
| Other Names | Nepriylisin, 3.4.24.11, Atriopeptidase, Common acute lymphocytic leukemia antigen, CALLA, Enkephalinase, Neutral endopeptidase 24.11, NEP, Neutral endopeptidase, Skin fibroblast elastase, SFE, CD10, MME, EPN |
| Dilution | WB~~1/500 - 1/2000 IHC~~1/200 - 1/1000 E~~N/A |
| Storage | Maintain refrigerated at 2-8°C for up to 6 months. For long term storage store at -20°C in small aliquots to prevent freeze-thaw cycles. |
| Precautions | CD10 Antibody is for research use only and not for use in diagnostic or |

therapeutic procedures.

Protein Information

References

1. Journal of Gastroenterology, 1996 Feb. 31(1):12-7. 2. British Journal of Haematology, 1995, 89(3):623-6.

Images

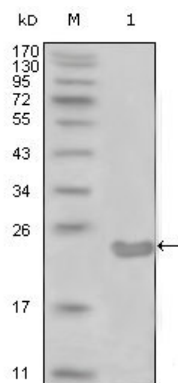


Figure 1: Western blot analysis using CD10 mouse mAb against truncated CD10-His recombinant protein (1).

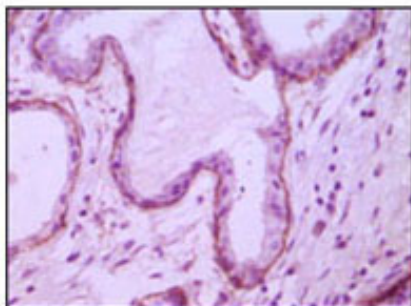


Figure 2: Immunohistochemical analysis of paraffin-embedded human breast ductal myoepithelium, showing cytoplasmic and membrane location with DAB staining using CD10 mouse mAb.

Please note: All products are 'FOR RESEARCH USE ONLY. NOT FOR USE IN DIAGNOSTIC OR THERAPEUTIC PROCEDURES'.