

ESR1 Antibody

Purified Mouse Monoclonal Antibody
Catalog # AO1233a

Product Information

Application	WB, E
Primary Accession	P03372
Reactivity	Human
Host	Mouse
Clonality	Monoclonal
Clone Names	2G112B3
Isotype	IgG1
Calculated MW	66216 Da
Description	ESR1: estrogen receptor 1. This gene encodes an estrogen receptor, a ligand-activated transcription factor composed of several domains important for hormone binding, DNA binding, and activation of transcription. The protein localizes to the nucleus where it may form a homodimer or a heterodimer with estrogen receptor 2. Estrogen and its receptors are essential for sexual development and reproductive function, but also play a role in other tissues such as bone. Estrogen receptors are also involved in pathological processes including breast cancer, endometrial cancer, and osteoporosis. Alternative splicing results in several transcript variants, which differ in their 5' UTRs and use different promoters.
Immunogen	Synthetic peptide corresponding to aa(SLQKYYITGEAEGFPATVc) of human ESR1, conjugated to KLH.
Formulation	Ascitic fluid containing 0.03% sodium azide.

Additional Information

Other Names	Estrogen receptor, ER, ER-alpha, Estradiol receptor, Nuclear receptor subfamily 3 group A member 1, ESR1, ESR, NR3A1
Dilution	WB~~1/500 - 1/2000 E~~N/A
Storage	Maintain refrigerated at 2-8°C for up to 6 months. For long term storage store at -20°C in small aliquots to prevent freeze-thaw cycles.
Precautions	ESR1 Antibody is for research use only and not for use in diagnostic or therapeutic procedures.

Protein Information

References

1. Calcif Tissue Int. 2007 May;80(5):307-15.

Images

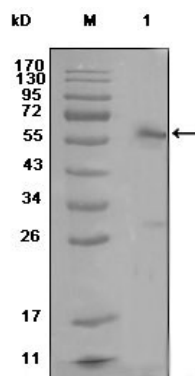


Figure 1: Western blot analysis using ESR1 mouse mAb against MCF-7 cell lysate (1)

Please note: All products are 'FOR RESEARCH USE ONLY. NOT FOR USE IN DIAGNOSTIC OR THERAPEUTIC PROCEDURES'.