

# LPA Antibody

Purified Mouse Monoclonal Antibody

Catalog # AO1243a

## Product Information

---

<b>Application</b>	WB, IHC, E
<b>Primary Accession</b>	<a href="#">P08519.1</a>
<b>Reactivity</b>	Human
<b>Host</b>	Mouse
<b>Clonality</b>	Monoclonal
<b>Clone Names</b>	8F6A9; 8H5C5
<b>Isotype</b>	IgG1
<b>Description</b>	LPA: lipoprotein, Lp(a). Apo(a) is the main constituent of lipoprotein(a) (lp(a)). It has serine proteinase activity and is able of autoproteolysis. Inhibits tissue-type plasminogen activator 1.Lp(a) may be a ligand for megalin/gp 330.Apo(a) is known to be proteolytically cleaved, leading to the formation of the so-called mini-lp(a).Apo(a) fragments accumulate in atherosclerotic lesions,where they may promote thrombogenesis.O-glycosylation may limit the extent of proteolytic fragmentation.
<b>Immunogen</b>	Purified recombinant fragment of LPA (4330-4521) expressed in E. Coli.
<b>Formulation</b>	Ascitic fluid containing 0.03% sodium azide.

## Additional Information

---

<b>Dilution</b>	WB~~1/500 - 1/2000 IHC~~1/200 - 1/1000 E~~N/A
<b>Storage</b>	Maintain refrigerated at 2-8°C for up to 6 months. For long term storage store at -20°C in small aliquots to prevent freeze-thaw cycles.
<b>Precautions</b>	LPA Antibody is for research use only and not for use in diagnostic or therapeutic procedures.

## Protein Information

---

## References

---

1. J Stroke Cerebrovasc Dis. 2007 Sep-Oct;16(5):220-4. 2. Clin Chim Acta. 2008 Jan;387(1-2):109-12.

## Images

---

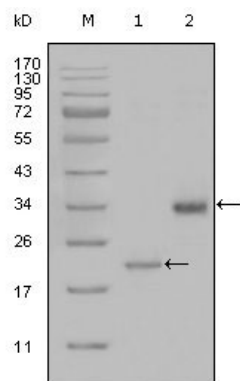


Figure 1: Western blot analysis using LPA mouse mAb against truncated LPA-His recombinant protein (1) and truncated Trx-LPA(aa4330-4521) recombinant protein (2).

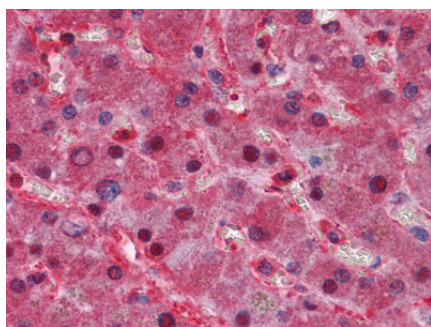


Figure 2: Immunohistochemical analysis of paraffin-embedded human Liver tissues using LPA mouse mAb

Please note: All products are 'FOR RESEARCH USE ONLY. NOT FOR USE IN DIAGNOSTIC OR THERAPEUTIC PROCEDURES'.