

PEG10 Antibody

Purified Mouse Monoclonal Antibody

Catalog # AO1244a

Product Information

Application	WB, IHC, ICC, E
Primary Accession	Q86TG7
Reactivity	Human
Host	Mouse
Clonality	Monoclonal
Clone Names	1B1C4
Isotype	IgG1
Calculated MW	80173
Description	PEG10: paternally expressed 10. This gene includes two overlapping reading frames of the same transcript encoding distinct isoforms. The shorter isoform has a CCHC-type zinc finger motif containing a sequence characteristic of gag proteins of most retroviruses and some retrotransposons, and it functions in part by interacting with members of the TGF-beta receptor family. The longer isoform has the active-site DSG consensus sequence of the protease domain of pol proteins. The longer isoform is the result of -1 translational frameshifting that is also seen in some retroviruses. Expression of these two isoforms only comes from the paternal allele due to imprinting. Increased gene expression (as observed by an increase in mRNA levels) is associated with hepatocellular carcinomas.
Immunogen	Purified recombinant fragment of PEG10 (aa1-120) expressed in E. Coli.
Formulation	Ascitic fluid containing 0.03% sodium azide.

Additional Information

Gene ID	23089
Other Names	Retrotransposon-derived protein PEG10, Embryonal carcinoma differentiation-regulated protein, Mammalian retrotransposon-derived protein 2, Myelin expression factor 3-like protein 1, MEF3-like protein 1, Paternally expressed gene 10 protein, Retrotransposon gag domain-containing protein 3, Retrotransposon-derived gag-like polypeptide, Ty3/Gypsy-like protein, PEG10, EDR, KIAA1051, MAR2, MART2, MEF3L1, RGAG3
Dilution	WB~~1/500 - 1/2000 IHC~~1/200 - 1/1000 ICC~~N/A E~~N/A
Storage	Maintain refrigerated at 2-8°C for up to 6 months. For long term storage store at -20°C in small aliquots to prevent freeze-thaw cycles.
Precautions	PEG10 Antibody is for research use only and not for use in diagnostic or

therapeutic procedures.

Protein Information

Name	PEG10 {ECO:0000303 PubMed:11318613, ECO:0000312 HGNC:HGNC:14005}
Function	Retrotransposon-derived protein that binds its own mRNA and self-assembles into virion-like capsids (PubMed: 34413232). Forms virion-like extracellular vesicles that encapsulate their own mRNA and are released from cells, enabling intercellular transfer of PEG10 mRNA (PubMed: 34413232). Binds its own mRNA in the 5'-UTR region, in the region near the boundary between the nucleocapsid (NC) and protease (PRO) coding sequences and in the beginning of the 3'-UTR region (PubMed: 34413232). Involved in placenta formation: required for trophoblast stem cells differentiation (By similarity). Involved at the immediate early stage of adipocyte differentiation (By similarity). Overexpressed in many cancers and enhances tumor progression: promotes cell proliferation by driving cell cycle progression from G0/G1 (PubMed: 12810624 , PubMed: 16423995 , PubMed: 26235627 , PubMed: 28193232). Enhances cancer progression by inhibiting the TGF-beta signaling, possibly via interaction with the TGF-beta receptor ACVRL1 (PubMed: 15611116 , PubMed: 26235627 , PubMed: 30094509). May bind to the 5'-GCCTGTCTTT-3' DNA sequence of the MB1 domain in the myelin basic protein (MBP) promoter; additional evidences are however required to confirm this result (By similarity).
Cellular Location	Extracellular vesicle membrane. Cytoplasm. Nucleus Note=Forms virion-like extracellular vesicles that are released from cells (PubMed: 34413232). Detected predominantly in the cytoplasm of breast and prostate carcinomas, in hepatocellular carcinoma (HCC) and B-cell chronic lymphocytic leukemia (B-CLL) cells and in the Hep-G2 cell line (PubMed: 12810624).
Tissue Location	Expressed in the cytotrophoblast layer but not in the overlying syncytiotrophoblast of the placenta. Expressed in prostate and breast carcinomas but not in normal breast and prostate epithelial cells. Expressed in the Hep-G2 cell line (at protein level) Expressed in brain, liver, spleen, kidney, thymus, lung, ovary, testis, reactive lymph node, skeletal muscle, adipose tissue and placenta Expressed in pancreatic and hepatocellular carcinomas (HCC)

References

1. Oncogene. 2007 Aug 23;26(39):5741-51. 2. FEBS Lett. 2008 Aug 6;582(18):2793-8.

Images

Figure 1: Western blot analysis using PEG10 mouse mAb against truncated Trx-PEG10 recombinant protein (1), truncated GST-PEG10 (aa1-120) recombinant protein (2) and full-length PEG10 (aa1-325)-hIgGfc transfected CHO-K1 cell lysate (3).

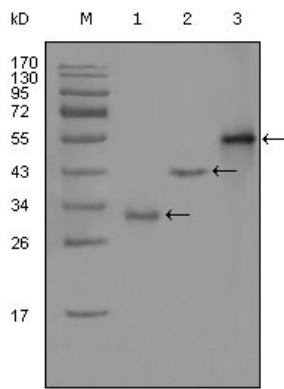


Figure 2: Immunohistochemical analysis of paraffin-embedded human Placenta tissues using PEG10 mouse mAb

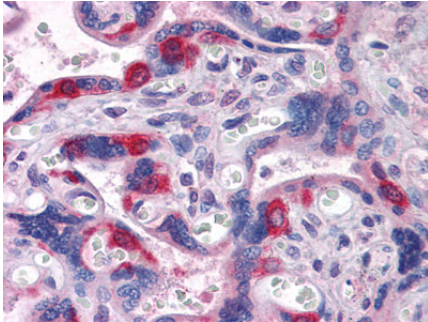
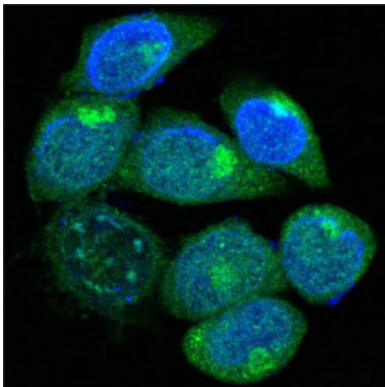


Figure 3: Confocal immunofluorescence analysis of methanol-fixed HepG2 cells using PEG10 mouse mAb (green), showing cytoplasmic localization. Blue: DRAQ5 fluorescent DNA dye.



Please note: All products are 'FOR RESEARCH USE ONLY. NOT FOR USE IN DIAGNOSTIC OR THERAPEUTIC PROCEDURES'.