

Mammaglobin-1 Antibody

Purified Mouse Monoclonal Antibody

Catalog # AO1248a

Product Information

Application	WB, E
Primary Accession	Q13296
Reactivity	Human
Host	Mouse
Clonality	Monoclonal
Clone Names	1G8D6; 2E7G9
Isotype	IgG1
Calculated MW	10499
Description	Mammaglobin is a gene that is expressed almost exclusively in the normal breast epithelium and human breast cancer. It is a member of the secretoglobin gene family and forms a heterodimer with lipophilin B. It has been suggested that mammaglobin may be a useful marker for breast cancer clinical research. Studies investigating the detection of mRNA by RT PCR from circulating carcinoma cells in the peripheral blood of breast cancer patients have shown that mammaglobin is a highly specific marker and correlates with several prognostic factors, such as lymph node involvement.
Immunogen	Purified recombinant fragment of Mammaglobin-1 expressed in E. Coli.
Formulation	Ascitic fluid containing 0.03% sodium azide.

Additional Information

Gene ID	4250
Other Names	Mammaglobin-A, Mammaglobin-1, Secretoglobin family 2A member 2, SCGB2A2, MGB1, UGB2
Dilution	WB~~1/500 - 1/2000 E~~N/A
Storage	Maintain refrigerated at 2-8°C for up to 6 months. For long term storage store at -20°C in small aliquots to prevent freeze-thaw cycles.
Precautions	Mammaglobin-1 Antibody is for research use only and not for use in diagnostic or therapeutic procedures.

Protein Information

Name	SCGB2A2
-------------	---------

Synonyms	MGB1, UGB2
Cellular Location	Secreted.
Tissue Location	Mammary gland specific. Over-expressed in breast cancer

References

1. Am J Clin Pathol. 2004 May;121(5):637-43. 2. Eur J Surg Oncol. 2007 Feb;33(1):16-22.

Images

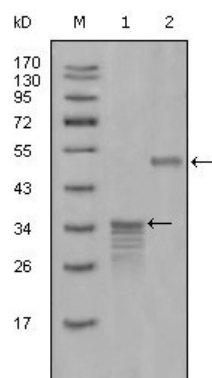


Figure 1: Western blot analysis using Mammaglobin-1 mouse mAb against full-length GST- Mammaglobin-1 (1) and full-length MBP- Mammaglobin-1 (aa1-193) recombinant protein (2).

Please note: All products are 'FOR RESEARCH USE ONLY. NOT FOR USE IN DIAGNOSTIC OR THERAPEUTIC PROCEDURES'.