

# DKK1 Antibody

Purified Mouse Monoclonal Antibody

Catalog # AO1266a

## Product Information

---

<b>Application</b>	WB, E
<b>Primary Accession</b>	<a href="#">O94907</a>
<b>Reactivity</b>	Human
<b>Host</b>	Mouse
<b>Clonality</b>	Monoclonal
<b>Clone Names</b>	2H2
<b>Isotype</b>	IgG2b
<b>Calculated MW</b>	28672
<b>Description</b>	DKK1: dickkopf homolog 1 ( <i>Xenopus laevis</i> ), also known as SK. Entrez Protein NP_036374. DKK1 is a member of the dickkopf family. It is a secreted protein with two cysteine rich regions and is involved in embryonic development through its inhibition of the WNT signaling pathway. Elevated levels of DKK1 in bone marrow plasma and peripheral blood is associated with the presence of osteolytic bone lesions in patients with multiple myeloma.
<b>Immunogen</b>	Purified recombinant fragment of DKK1 expressed in E. Coli.
<b>Formulation</b>	Ascitic fluid containing 0.03% sodium azide.

## Additional Information

---

<b>Gene ID</b>	22943
<b>Other Names</b>	Dickkopf-related protein 1, Dickkopf-1, Dkk-1, hDkk-1, SK, DKK1
<b>Dilution</b>	WB~~1/500 - 1/2000 E~~N/A
<b>Storage</b>	Maintain refrigerated at 2-8°C for up to 6 months. For long term storage store at -20°C in small aliquots to prevent freeze-thaw cycles.
<b>Precautions</b>	DKK1 Antibody is for research use only and not for use in diagnostic or therapeutic procedures.

## Protein Information

---

<b>Name</b>	DKK1
<b>Function</b>	Antagonizes canonical Wnt signaling by inhibiting LRP5/6 interaction with Wnt and by forming a ternary complex with the transmembrane protein

KREMEN that promotes internalization of LRP5/6 (PubMed:[22000856](#)). DKKs play an important role in vertebrate development, where they locally inhibit Wnt regulated processes such as antero-posterior axial patterning, limb development, somitogenesis and eye formation. In the adult, Dkks are implicated in bone formation and bone disease, cancer and Alzheimer disease (PubMed:[17143291](#)). Inhibits the pro-apoptotic function of KREMEN1 in a Wnt-independent manner, and has anti-apoptotic activity (By similarity).

**Cellular Location** Secreted.

**Tissue Location** Placenta.

## References

1. Dev Cell. 2008 Jul;15(1):37-48. 2. Cancer Lett. 2008 Sep 28;269(1):67-77.

## Images

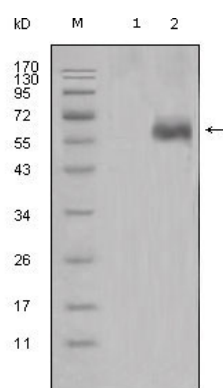


Figure 1: Western blot analysis using DKK1 mouse mAb against HEK293 (1) and DKK1-hIgGfC transfected HEK293 cell lysate (2).

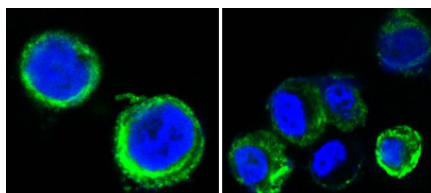


Figure 2: Confocal immunofluorescence analysis of methanol-fixed HEK293 cells trasfected with AXL-hIgGfC using AXL mouse mAb(green), showing cytoplasmic and membrane localization. Blue: DRAQ5 fluorescent DNA dye.

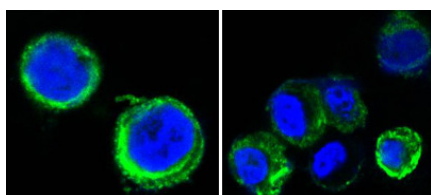


Figure 2: Confocal immunofluorescence analysis of methanol-fixed HEK293 cells trasfected with AXL-hIgGfC using anti-AXL monoclonal antioby(green), showing cytoplasmic and membrane localization. Blue: DRAQ5 fluorescent DNA dye.

Please note: All products are 'FOR RESEARCH USE ONLY. NOT FOR USE IN DIAGNOSTIC OR THERAPEUTIC PROCEDURES'.