

ISL1 Antibody

Mouse Monoclonal Antibody to ISL1
Catalog # AO1276b

Product Information

Application	WB, ICC, E
Primary Accession	P61371
Reactivity	Human
Host	Mouse
Clonality	Monoclonal
Clone Names	1B1
Isotype	Mouse IgG1
Calculated MW	39036 Da
Description	ISL1 (ISL1 transcription factor, LIM/homeodomain) is a member of the LIM/homeodomain family of transcription factors. It binds to the enhancer region of the insulin gene, among others, and may play an important role in regulating insulin gene expression. It is central to the development of pancreatic cell lineages and may also be required for motor neuron generation. Islet-1 expression defines cardiac progenitor cell populations and is required for normal cardiac development and asymmetry. Mutations in this gene have been associated with maturity-onset diabetes of the young.
Immunogen	Purified recombinant fragment of human ISL1 expressed in E. Coli.

Additional Information

Other Names	Insulin gene enhancer protein ISL-1, Islet-1, ISL1
Target/Specificity	Purified recombinant fragment of human ISL1 expressed in E. Coli.
Dilution	WB~~1:500~~2000 ICC~~1:200~~1000 E~~N/A
Format	Ascitic fluid containing 0.03% sodium azide.
Storage	Maintain refrigerated at 2-8°C for up to 6 months. For long term storage store at -20°C in small aliquots to prevent freeze-thaw cycles.
Precautions	ISL1 Antibody is for research use only and not for use in diagnostic or therapeutic procedures.

Protein Information

References

1. Cell. 1996 Jan 26;84(2):309-20.

2. J Neurosci. 2008 Mar 26;28(13):3291-7.

Images

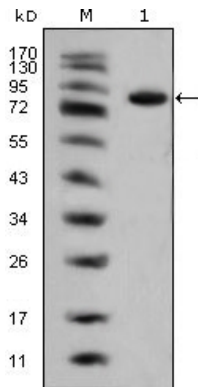


Figure 1: Western blot analysis using ISL1 mouse mAb against full-length ISL1 (aa1-349)-hIgGFc transfected HEK293 cell lysate(1).

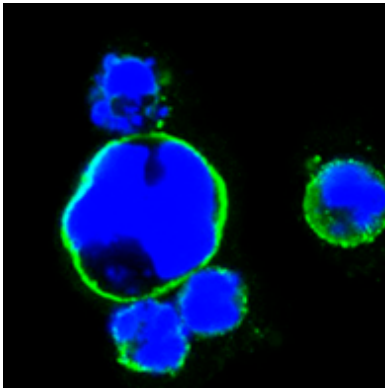


Figure 2: Confocal immunofluorescence analysis of HEK293 cells trasfected with full-length ISL1-hIgGFc using ISL1 mouse mAb (green). Blue: DRAQ5 fluorescent DNA dye.

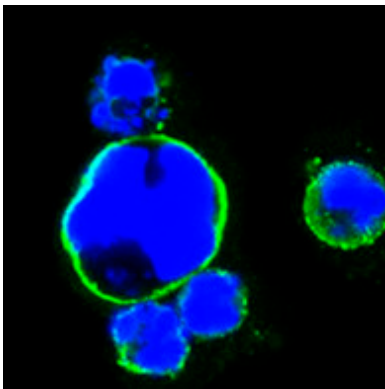


Figure 2: Confocal immunofluorescence analysis of HEK293 cells trasfected with full-length ISL1-hIgGFc using anti-ISL1 monoclonal antibody (green). Blue: DRAQ5 fluorescent DNA dye.

Please note: All products are 'FOR RESEARCH USE ONLY. NOT FOR USE IN DIAGNOSTIC OR THERAPEUTIC PROCEDURES'.