

human IgG (Fc Specific) Antibody

Purified Mouse Monoclonal Antibody

Catalog # AO1277a

Product Information

| | |
|--------------------|---|
| Application | WB, E |
| Reactivity | Human |
| Host | Mouse |
| Clonality | Monoclonal |
| Clone Names | 2E4 |
| Isotype | IgG1 |
| Description | Specificity of antibody has been tested using Western blot, immunofluorescence, and ELISA. The product reacts with human IgG (Fc) with no significant reactivity with human IgG (Fab2), IgM or other serum proteins. We didn't test crossing with other species IgG (Fc). |
| Immunogen | Purified fusion protein with human IgG (Fc Specific) tag. |
| Formulation | Ascitic fluid containing 0.03% sodium azide. |

Additional Information

| | |
|--------------------|--|
| Dilution | WB~~1/500 - 1/2000 E~~N/A |
| Storage | Maintain refrigerated at 2-8°C for up to 6 months. For long term storage store at -20°C in small aliquots to prevent freeze-thaw cycles. |
| Precautions | human IgG (Fc Specific) Antibody is for research use only and not for use in diagnostic or therapeutic procedures. |

References

N/A

Images

Figure 1: Western blot analysis using human IgG (Fc specific) mouse mAb against human serum (1).

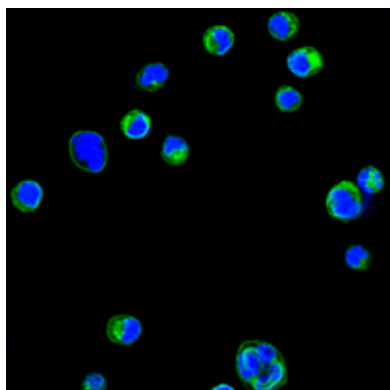
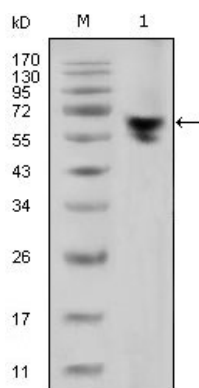


Figure 1: Confocal immunofluorescence analysis of HL60 cells using CD18 mouse mAb (green). Blue: DRAQ5 fluorescent DNA dye.

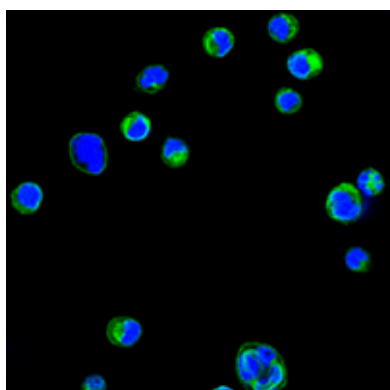


Figure 1: Confocal immunofluorescence analysis of HL60 cells using anti-CD18 monoclonal antibody (green). Blue: DRAQ5 fluorescent DNA dye.

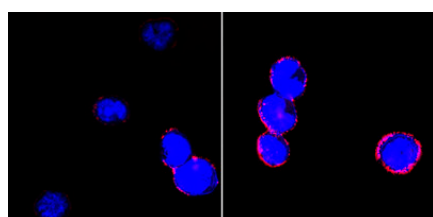


Figure 2: Confocal immunofluorescence analysis of BCBL-1 cells (left) and L1210 cells (right) using anti-CD18 monoclonal antibody (red). Blue: DRAQ5 fluorescent DNA dye.

Please note: All products are 'FOR RESEARCH USE ONLY. NOT FOR USE IN DIAGNOSTIC OR THERAPEUTIC PROCEDURES'.