

# MYL3 Antibody

Purified Mouse Monoclonal Antibody

Catalog # AO1282a

## Product Information

---

<b>Application</b>	WB, IHC, E
<b>Primary Accession</b>	<a href="#">P08590</a>
<b>Reactivity</b>	Human
<b>Host</b>	Mouse
<b>Clonality</b>	Monoclonal
<b>Clone Names</b>	3F8
<b>Isotype</b>	IgG1
<b>Calculated MW</b>	21932
<b>Description</b>	Myosins are a large superfamily of motor proteins that move along actin filaments, while hydrolyzing ATP. Myosin is the major component of thick muscle filaments, and is a long asymmetric molecule containing a globular head and a long tail. The molecule consists of two heavy chains and four light chains. Activation of smooth and cardiac muscle primarily involves pathways which increase calcium and myosin phosphorylation resulting in contraction. Myosin light chain phosphatase acts to regulate muscle contraction by dephosphorylating activated myosin light chain. MYL3 encodes myosin light chain 3, an alkali light chain also referred to in the literature as both the ventricular isoform and the slow skeletal muscle isoform. Human myosin light chain has clinical application as a cardiac marker. Mutations in MYL3 have been identified as a cause of mid-left ventricular chamber type hypertrophic cardiomyopathy.
<b>Immunogen</b>	Purified recombinant fragment of MYL3 expressed in E. Coli.
<b>Formulation</b>	Ascitic fluid containing 0.03% sodium azide.

## Additional Information

---

<b>Gene ID</b>	4634
<b>Other Names</b>	Myosin light chain 3, Cardiac myosin light chain 1, CMLC1, Myosin light chain 1, slow-twitch muscle B/ventricular isoform, MLC1SB, Ventricular/slow twitch myosin alkali light chain, MYL3
<b>Dilution</b>	WB~~1/500 - 1/2000 IHC~~1/200 - 1/1000 E~~N/A
<b>Storage</b>	Maintain refrigerated at 2-8°C for up to 6 months. For long term storage store at -20°C in small aliquots to prevent freeze-thaw cycles.
<b>Precautions</b>	MYL3 Antibody is for research use only and not for use in diagnostic or therapeutic procedures.

## Protein Information

---

Name	MYL3 ( <a href="#">HGNC:7584</a> )
Function	Regulatory light chain of myosin. Does not bind calcium.

## References

---

1. Xie B, et al. Biophys Chem. 2003 Oct 1;106(1):57-66. 2. Haase H, et al. FASEB J. 2006 May;20(7):865-73.

## Images

---

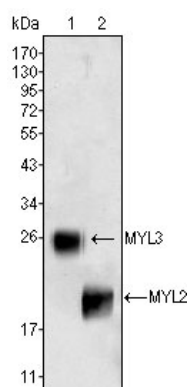


Figure 1: Western blot analysis using MYL3 (1) and MYL2 (2) mouse mAb against rat fetal heart tissues lysate.

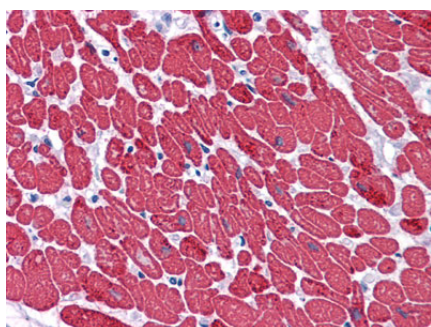


Figure 2: Immunohistochemical analysis of paraffin-embedded human Heart tissues using MYL3 mouse mAb.

Please note: All products are 'FOR RESEARCH USE ONLY. NOT FOR USE IN DIAGNOSTIC OR THERAPEUTIC PROCEDURES'.