

# AAT Antibody

Purified Mouse Monoclonal Antibody

Catalog # AO1290a

## Product Information

---

<b>Application</b>	WB, E
<b>Primary Accession</b>	<a href="#">P01009</a>
<b>Reactivity</b>	Human, Mouse
<b>Host</b>	Mouse
<b>Clonality</b>	Monoclonal
<b>Clone Names</b>	2B12
<b>Isotype</b>	IgG1
<b>Calculated MW</b>	46737
<b>Description</b>	AAT, also known as SERPINA1; serpin peptidase inhibitor, clade A (alpha-1 antiproteinase, antitrypsin), member 1. It is secreted and is a serine protease inhibitor whose targets include elastase, plasmin, thrombin, trypsin, chymotrypsin, and plasminogen activator. Severe Serpin A1 deficiency leads to several clinical complications such as pulmonary emphysema, juvenile hepatitis, cirrhosis and hepatocellular carcinoma.
<b>Immunogen</b>	Purified recombinant fragment of human AAT expressed in E. Coli.
<b>Formulation</b>	Ascitic fluid containing 0.03% sodium azide.

## Additional Information

---

<b>Gene ID</b>	5265
<b>Other Names</b>	Alpha-1-antitrypsin, Alpha-1 protease inhibitor, Alpha-1-antiproteinase, Serpin A1, Short peptide from AAT, SPAAT, SERPINA1, AAT, PI
<b>Dilution</b>	WB~~1/500 - 1/2000 E~~N/A
<b>Storage</b>	Maintain refrigerated at 2-8°C for up to 6 months. For long term storage store at -20°C in small aliquots to prevent freeze-thaw cycles.
<b>Precautions</b>	AAT Antibody is for research use only and not for use in diagnostic or therapeutic procedures.

## Protein Information

---

<b>Name</b>	SERPINA1 ( <a href="#">HGNC:8941</a> )
<b>Synonyms</b>	AAT, PI

<b>Function</b>	Inhibitor of serine proteases. Its primary target is elastase, but it also has a moderate affinity for plasmin and thrombin. Irreversibly inhibits trypsin, chymotrypsin and plasminogen activator. The aberrant form inhibits insulin-induced NO synthesis in platelets, decreases coagulation time and has proteolytic activity against insulin and plasmin.
<b>Cellular Location</b>	Secreted. Endoplasmic reticulum. Note=The S and Z allele are not secreted effectively and accumulate intracellularly in the endoplasmic reticulum
<b>Tissue Location</b>	Ubiquitous. Expressed in leukocytes and plasma.

## References

---

1. J Proteome Res. 2005 Nov-Dec;4(6):2070-80. 2. Neuro Endocrinol Lett. 2008 Aug;29(4):482-4.

## Images

---

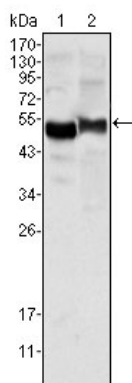


Figure 1: Western blot analysis using AAT mouse mAb against human plasma (1) and NIH/3T3 cell lysate (2).

Please note: All products are 'FOR RESEARCH USE ONLY. NOT FOR USE IN DIAGNOSTIC OR THERAPEUTIC PROCEDURES'.