

AFP Antibody

Purified Mouse Monoclonal Antibody

Catalog # AO1330a

Product Information

Application	WB, E
Primary Accession	P02771
Reactivity	Human
Host	Mouse
Clonality	Monoclonal
Clone Names	6E6
Isotype	IgG2b
Calculated MW	68678
Description	AFP (alpha-fetoprotein), a major plasma protein produced by the yolk sac and the liver during fetal life. Alpha-fetoprotein expression in adults is often associated with hepatoma or teratoma. However, hereditary persistence of alpha-fetoprotein may also be found in individuals with no obvious pathology. The protein is thought to be the fetal counterpart of serum albumin, and the alpha-fetoprotein and albumin genes are present in tandem in the same transcriptional orientation on chromosome 4. Alpha-fetoprotein is found in monomeric as well as dimeric and trimeric forms, and binds copper, nickel, fatty acids and bilirubin. The level of alpha-fetoprotein in amniotic fluid is used to measure renal loss of protein to screen for spina bifida and anencephaly.
Immunogen	Purified recombinant fragment of human AFP expressed in E. Coli.
Formulation	Antibody are purified by protein G affinity chromatography. Liquid in PBS containing 50% glycerol and 0.03% sodium azide.

Additional Information

Gene ID	174
Other Names	Alpha-fetoprotein, Alpha-1-fetoprotein, Alpha-fetoglobulin, AFP, HPAFP
Dilution	WB~~1/500 - 1/2000 E~~N/A
Storage	Maintain refrigerated at 2-8°C for up to 6 months. For long term storage store at -20°C in small aliquots to prevent freeze-thaw cycles.
Precautions	AFP Antibody is for research use only and not for use in diagnostic or therapeutic procedures.

Protein Information

Name	AFP
Synonyms	HPAFP
Function	Binds copper, nickel, and fatty acids as well as, and bilirubin less well than, serum albumin. Only a small percentage (less than 2%) of the human AFP shows estrogen-binding properties.
Cellular Location	Secreted.
Tissue Location	Plasma. Synthesized by the fetal liver and yolk sac

References

1. Proc Natl Acad Sci U S A. 1985 Nov;82(21):7160-4. 2. Pediatr Hematol Oncol. 2001 Dec;18(8):509-18. 3. Tumour Biol. 2002 Jul-Aug;23(4):202-11.

Images

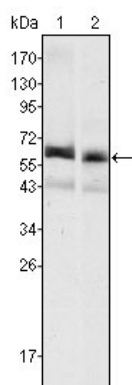


Figure 1: Western blot analysis using AFP mouse mAb against HepG2 (1) and SMMC-7721 (2) cell lysate.

Please note: All products are 'FOR RESEARCH USE ONLY. NOT FOR USE IN DIAGNOSTIC OR THERAPEUTIC PROCEDURES'.