

# GOT2 Antibody

Purified Mouse Monoclonal Antibody

Catalog # AO1357a

## Product Information

---

<b>Application</b>	WB, ICC, E
<b>Primary Accession</b>	<a href="#">P00505</a>
<b>Reactivity</b>	Human, Mouse, Rat, Monkey
<b>Host</b>	Mouse
<b>Clonality</b>	Monoclonal
<b>Clone Names</b>	3E9
<b>Isotype</b>	IgG1
<b>Calculated MW</b>	47518
<b>Description</b>	Glutamic-oxaloacetic transaminase is a pyridoxal phosphate-dependent enzyme which exists in cytoplasmic and inner-membrane mitochondrial forms, GOT1 and GOT2, respectively. GOT plays a role in amino acid metabolism and the urea and tricarboxylic acid cycles. The two enzymes are homodimeric and show close homology.
<b>Immunogen</b>	Purified recombinant fragment of human GOT2 expressed in E. Coli.
<b>Formulation</b>	Ascitic fluid containing 0.03% sodium azide.

## Additional Information

---

<b>Gene ID</b>	2806
<b>Other Names</b>	Aspartate aminotransferase, mitochondrial, mAspAT, 2.6.1.1, 2.6.1.7, Fatty acid-binding protein, FABP-1, Glutamate oxaloacetate transaminase 2, Kynurenine aminotransferase 4, Kynurenine aminotransferase IV, Kynurenine--oxoglutarate transaminase 4, Kynurenine--oxoglutarate transaminase IV, Plasma membrane-associated fatty acid-binding protein, FABPpm, Transaminase A, GOT2
<b>Dilution</b>	WB~~1/500 - 1/2000 ICC~~N/A E~~N/A
<b>Storage</b>	Maintain refrigerated at 2-8°C for up to 6 months. For long term storage store at -20°C in small aliquots to prevent freeze-thaw cycles.
<b>Precautions</b>	GOT2 Antibody is for research use only and not for use in diagnostic or therapeutic procedures.

## Protein Information

---

<b>Name</b>	GOT2 ( <a href="#">HGNC:4433</a> )
-------------	------------------------------------

<b>Function</b>	Catalyzes the irreversible transamination of the L-tryptophan metabolite L-kynurenine to form kynurenic acid (KA). As a member of the malate-aspartate shuttle, it has a key role in the intracellular NAD(H) redox balance. Is important for metabolite exchange between mitochondria and cytosol, and for amino acid metabolism. Facilitates cellular uptake of long-chain free fatty acids.
<b>Cellular Location</b>	Mitochondrion matrix. Cell membrane. Note=Exposure to alcohol promotes translocation to the cell membrane.

## References

1. Hepatology. 1998 Apr;27(4):1064-74. 2. Cell. 2005 Sep 23;122(6):957-68. 3. Psychiatr Genet. 2007 Oct;17(5):314.

## Images

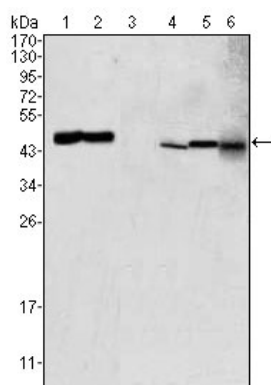


Figure 1: Western blot analysis using GOT2 mouse mAb against HEK293 (1), PC-12 (2), HL-60 (3), BCBL-1 (4), HepG2 (5) and NIH/3T3 (6) cell lysate.

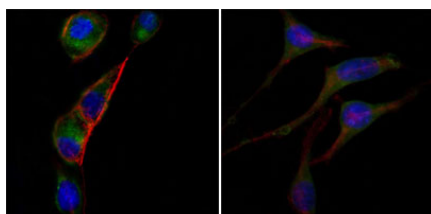


Figure 2: Immunofluorescence analysis of PC-3 (left) and SK-BR-3 (right) cells using anti-GOT2 mAb (green). Red: Actin filaments have been labeled with DY-554 phalloidin. Blue: DRAQ5 fluorescent DNA dye.

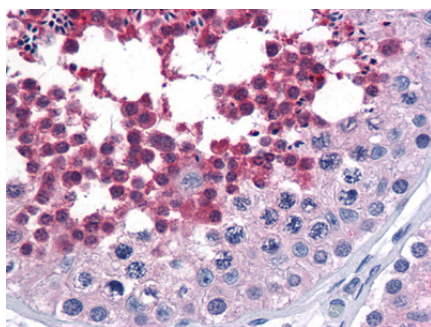


Figure 2: Immunohistochemical analysis of paraffin-embedded human Testis tissues using anti-GOT2 mouse mAb

Please note: All products are 'FOR RESEARCH USE ONLY. NOT FOR USE IN DIAGNOSTIC OR THERAPEUTIC PROCEDURES'.