

# ETS1 Antibody

Purified Mouse Monoclonal Antibody

Catalog # AO1371a

## Product Information

---

<b>Application</b>	WB, IHC, FC, ICC, E
<b>Primary Accession</b>	<a href="#">P14921</a>
<b>Reactivity</b>	Human
<b>Host</b>	Mouse
<b>Clonality</b>	Monoclonal
<b>Clone Names</b>	8A8
<b>Isotype</b>	IgG1
<b>Calculated MW</b>	50408
<b>Description</b>	The ETS1 is a transcription factor known to regulate expression of a number of genes involved in extracellular matrix remodeling. ETS1 is absent from normal gastric epithelium but is expressed in approximately 60% of gastric carcinomas and oral squamous cell carcinomas with a significant correlation to the tumor stage.
<b>Immunogen</b>	Purified recombinant fragment of human ETS1 expressed in E. Coli.
<b>Formulation</b>	Ascitic fluid containing 0.03% sodium azide.

## Additional Information

---

<b>Gene ID</b>	2113
<b>Other Names</b>	Protein C-ets-1, p54, ETS1, EWSR2
<b>Dilution</b>	WB~~1/500 - 1/2000 IHC~~1/200 - 1/1000 FC~~1/200 - 1/400 ICC~~N/A E~~N/A
<b>Storage</b>	Maintain refrigerated at 2-8°C for up to 6 months. For long term storage store at -20°C in small aliquots to prevent freeze-thaw cycles.
<b>Precautions</b>	ETS1 Antibody is for research use only and not for use in diagnostic or therapeutic procedures.

## Protein Information

---

<b>Name</b>	ETS1
<b>Synonyms</b>	EWSR2

<b>Function</b>	Transcription factor (PubMed: <a href="#">10698492</a> , PubMed: <a href="#">11909962</a> ). Directly controls the expression of cytokine and chemokine genes in a wide variety of different cellular contexts (PubMed: <a href="#">20378371</a> ). May control the differentiation, survival and proliferation of lymphoid cells (PubMed: <a href="#">20378371</a> ). May also regulate angiogenesis through regulation of expression of genes controlling endothelial cell migration and invasion (PubMed: <a href="#">15247905</a> , PubMed: <a href="#">15592518</a> ).
<b>Cellular Location</b>	Nucleus. Cytoplasm Note=Delocalizes from nucleus to cytoplasm when coexpressed with isoform Ets-1 p27.
<b>Tissue Location</b>	Highly expressed within lymphoid cells. Isoforms c- ETS-1A and Ets-1 p27 are both detected in all fetal tissues tested, but vary with tissue type in adult tissues. None is detected in brain or kidney.

## References

1. DNA Cell Biol. 2005 Feb;24(2):126-32. 2. Mol Hum Reprod. 2006 Feb;12(2):71-6. 3. J Biol Chem. 2008 Jan 11;283(2):951-62.

## Images

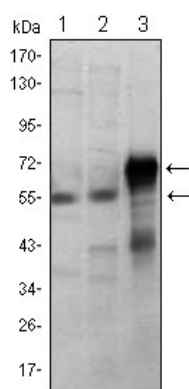


Figure 1: Western blot analysis using ETS1 mouse mAb against Jurkat (1), HepG2 (2) and ETS1-hIgGFc transfected HEK293 (3) cell lysate.

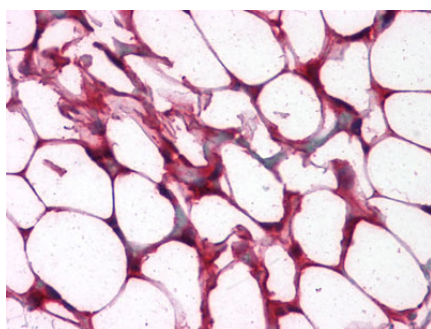


Figure 2: Immunohistochemical analysis of paraffin-embedded human Colon, Adipocytes tissues using anti-ETS1 mouse mAb

Figure 3: Immunofluorescence analysis of NIH/3T3 cells using anti-ETS1 mAb (green). Blue: DRAQ5 fluorescent DNA dye.

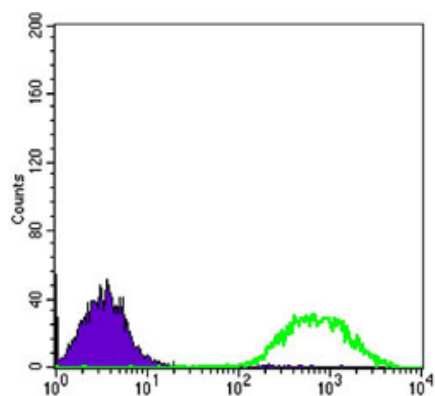
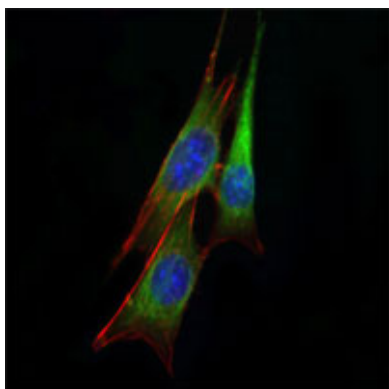


Figure 4: Flow cytometric analysis of Jurkat cells using anti-ETS1 mAb (green) and negative control (purple).

Please note: All products are 'FOR RESEARCH USE ONLY. NOT FOR USE IN DIAGNOSTIC OR THERAPEUTIC PROCEDURES'.