

PTH Antibody

Purified Mouse Monoclonal Antibody

Catalog # AO1377a

Product Information

Application	WB, E
Primary Accession	P01270
Reactivity	Human
Host	Mouse
Clonality	Monoclonal
Clone Names	2C7
Isotype	IgG2b
Calculated MW	12861
Description	The protein encoded by this gene is a hormone secreted by parathyroid cells. This hormone elevates blood Ca ²⁺ level by dissolving the salts in bone and preventing their renal excretion. Defects in this gene are a cause of familial isolated hypoparathyroidism (FIH).
Immunogen	Purified recombinant fragment of human PTH(aa1-115) expressed in E. Coli.
Formulation	Ascitic fluid containing 0.03% sodium azide.

Additional Information

Gene ID	5741
Other Names	Parathyroid hormone, PTH, Parathormone, Parathyrin, PTH
Dilution	WB~~1/500 - 1/2000 E~~N/A
Storage	Maintain refrigerated at 2-8°C for up to 6 months. For long term storage store at -20°C in small aliquots to prevent freeze-thaw cycles.
Precautions	PTH Antibody is for research use only and not for use in diagnostic or therapeutic procedures.

Protein Information

Name	PTH {ECO:0000303 PubMed:35932760, ECO:0000312 HGNC:HGNC:9606}
Function	Parathyroid hormone elevates calcium level by dissolving the salts in bone and preventing their renal excretion (PubMed: 11604398 , PubMed: 35932760). Acts by binding to its receptor, PTH1R, activating G protein-coupled receptor signaling (PubMed: 18375760 , PubMed: 35932760). Stimulates

[1-14C]-2-deoxy-D-glucose (2DG) transport and glycogen synthesis in osteoblastic cells (PubMed:[21076856](#)).

Cellular Location

Secreted

References

1. Eur Spine J. 2006 Oct;15(10):1521-8. 2. Blood. 2008 May 1;111(9):4496-9. 3. Clin J Am Soc Nephrol. 2009 Sep;4(9):1465-76.

Images

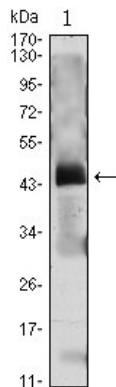


Figure 1: Western blot analysis using PTH mAb against PTH(AA: 1-115)-hIgGFc transfected HEK293 cell lysate.

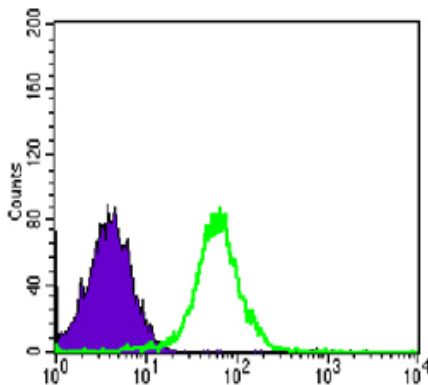


Figure 4: Flow cytometric analysis of PC-2 cells using CDH2 mouse mAb (green) and negative control (purple).

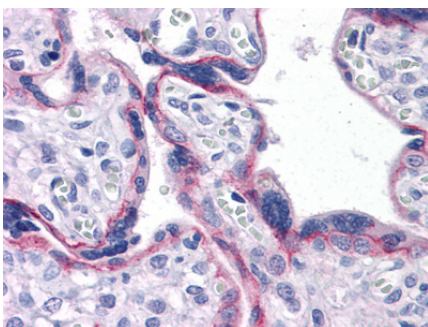
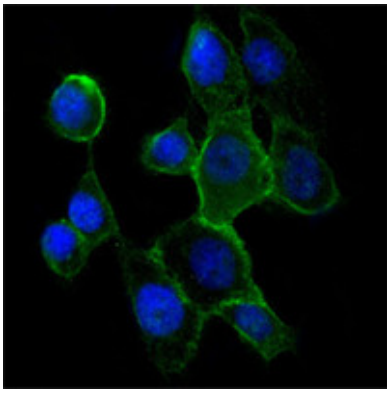


Figure 3: Immunohistochemical analysis of paraffin-embedded human Placenta tissues using CDH2 mouse mAb

Figure 3: Immunofluorescence analysis of A431 cells using CDH2 mouse mAb (green). Blue: DRAQ5 fluorescent DNA dye.



Please note: All products are 'FOR RESEARCH USE ONLY. NOT FOR USE IN DIAGNOSTIC OR THERAPEUTIC PROCEDURES'.