

# VCAM1 Antibody

Purified Mouse Monoclonal Antibody

Catalog # AO1398a

## Product Information

---

<b>Application</b>	WB, IHC, E
<b>Primary Accession</b>	<a href="#">P19320</a>
<b>Reactivity</b>	Human
<b>Host</b>	Mouse
<b>Clonality</b>	Monoclonal
<b>Clone Names</b>	6G9
<b>Isotype</b>	IgG1
<b>Calculated MW</b>	81276
<b>Description</b>	This gene is a member of the Ig superfamily and encodes a cell surface sialoglycoprotein expressed by cytokine-activated endothelium. This type I membrane protein mediates leukocyte-endothelial cell adhesion and signal transduction, and may play a role in the development of atherosclerosis and rheumatoid arthritis. Two alternatively spliced transcripts encoding different isoforms have been described for this gene. Tissue specificity: Expressed on inflamed vascular endothelium, as well as on macrophage-like and dendritic cell types in both normal and inflamed tissue. INVITROGEN: CD106 is expressed on bone marrow stromal cells, myeloid cells, and endothelial cells.
<b>Immunogen</b>	Purified recombinant fragment of human VCAM1 expressed in E. Coli.
<b>Formulation</b>	Ascitic fluid containing 0.03% sodium azide.

## Additional Information

---

<b>Gene ID</b>	7412
<b>Other Names</b>	Vascular cell adhesion protein 1, V-CAM 1, VCAM-1, INCAM-100, CD106, VCAM1, L1CAM
<b>Dilution</b>	WB~~1/500 - 1/2000 IHC~~1/500 - 1/2000 E~~N/A
<b>Storage</b>	Maintain refrigerated at 2-8°C for up to 6 months. For long term storage store at -20°C in small aliquots to prevent freeze-thaw cycles.
<b>Precautions</b>	VCAM1 Antibody is for research use only and not for use in diagnostic or therapeutic procedures.

## Protein Information

---

<b>Name</b>	VCAM1
-------------	-------

<b>Function</b>	Cell adhesion glycoprotein predominantly expressed on the surface of endothelial cells that plays an important role in immune surveillance and inflammation (PubMed: <a href="#">31310649</a> ). Acts as a major regulator of leukocyte adhesion to the endothelium through interaction with different types of integrins (PubMed: <a href="#">10209034</a> ). During inflammatory responses, binds ligands on the surface of activated endothelial cells to initiate the activation of calcium channels and the plasma membrane-associated small GTPase RAC1 leading to leukocyte transendothelial migration (PubMed: <a href="#">22970700</a> ). Also serves as a quality- control checkpoint for entry into bone marrow by providing a 'don't- eat-me' stamping in the context of major histocompatibility complex (MHC) class-I presentation (PubMed: <a href="#">35210567</a> ).
<b>Cellular Location</b>	[Vascular cell adhesion protein 1]: Cell membrane; Single-pass type I membrane protein
<b>Tissue Location</b>	Expressed on inflamed vascular endothelium, as well as on macrophage-like and dendritic cell types in both normal and inflamed tissue

## References

1. Cell Adh Migr. 2009 Oct;3(4):369-72. 2. Arthritis Rheum. 2010 Jan;62(1):105-16.

## Images

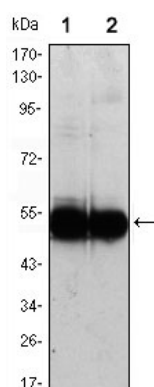


Figure 1: Western blot analysis using VCAM1 mouse mAb against HUVEC (1) and EC (2) cell lysate.

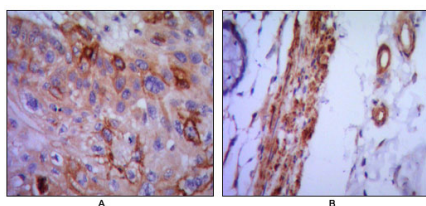


Figure 2: Immunohistochemical analysis of paraffin-embedded human lung cancer (A) and colon cancer (B) using VCAM1 mouse mAb with DAB staining.

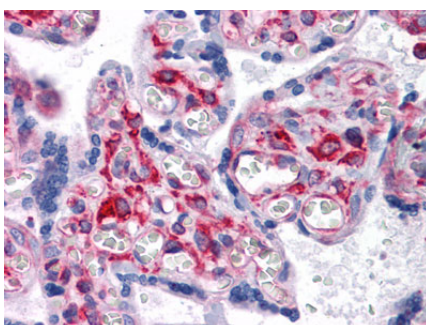


Figure 3: Immunohistochemical analysis of paraffin-embedded human Placenta tissues using VCAM1 mouse mAb

Please note: All products are 'FOR RESEARCH USE ONLY. NOT FOR USE IN DIAGNOSTIC OR THERAPEUTIC PROCEDURES'.