

MUM1 Antibody

Purified Mouse Monoclonal Antibody

Catalog # AO1401a

Product Information

Application	WB, IHC, E
Primary Accession	Q2TAK8
Reactivity	Human
Host	Mouse
Clonality	Monoclonal
Clone Names	4G10
Isotype	IgG1
Calculated MW	78636
Description	Mutated melanoma-associated antigen 1 (MUM1) is a 78 kDa protein encoded by the MUM1 gene. MUM1 is expressed in a subset of B cells in the light zone of the germinal center, plasma cells, activated T cells and a wide spectrum of related hematolymphoid neoplasms. Antibodies to MUM1 are useful in the sub classification of lymphoid malignancies.
Immunogen	Purified recombinant fragment of human MUM1 expressed in E. Coli.
Formulation	Ascitic fluid containing 0.03% sodium azide.

Additional Information

Gene ID	84939
Other Names	PWWP domain-containing protein MUM1, Mutated melanoma-associated antigen 1, MUM-1, Protein expandere, MUM1, EXPAND1
Dilution	WB~~1/500 - 1/2000 IHC~~1/500 - 1/2000 E~~N/A
Storage	Maintain refrigerated at 2-8°C for up to 6 months. For long term storage store at -20°C in small aliquots to prevent freeze-thaw cycles.
Precautions	MUM1 Antibody is for research use only and not for use in diagnostic or therapeutic procedures.

Protein Information

Name	PWWP3A (HGNC:29641)
Function	Involved in the DNA damage response pathway by contributing to the maintenance of chromatin architecture. Recruited to the vicinity of DNA

breaks by TP53BP1 and plays an accessory role to facilitate damage-induced chromatin changes and promoting chromatin relaxation. Required for efficient DNA repair and cell survival following DNA damage.

Cellular Location

Nucleus. Note=Recruited to DNA damage sites via its interaction with the BRCT domain of TP53BP1

References

1. Genome Res. 1996 Sep;6(9):791-806. 2. Proc Natl Acad Sci U S A. 2002 Dec 24;99(26):16899-903.

Images

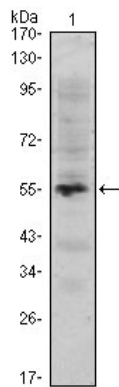


Figure 1: Western blot analysis using MUM1 mAb against human MUM1 (AA: 590-711) recombinant protein. (Expected MW is 39.8 kDa)

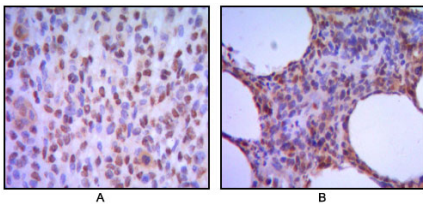


Figure 2: Immunohistochemical analysis of paraffin-embedded human melanoma (A), non-Hodgkin's lymphoma (B), using MUM1 mouse mAb with DAB staining.

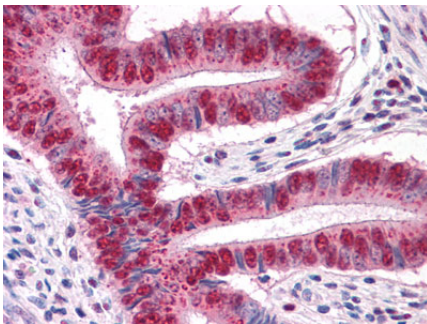


Figure 3: Immunohistochemical analysis of paraffin-embedded human Uterus tissues using MUM1 mouse mAb

Please note: All products are 'FOR RESEARCH USE ONLY. NOT FOR USE IN DIAGNOSTIC OR THERAPEUTIC PROCEDURES'.