

ETV5 Antibody

Purified Mouse Monoclonal Antibody

Catalog # AO1408a

Product Information

Application	WB, E
Primary Accession	P41161
Reactivity	Human
Host	Mouse
Clonality	Monoclonal
Clone Names	3H3
Isotype	IgG1
Calculated MW	57838
Description	ETS variant 5,transcription factor of the ETS family,divergent member of the winged helix-turn-helix superfamily,expressed in brain,placenta and other tissues involved in development. Tissue specificity: Ubiquitous. ERM is expressed in Sertoli cells and spermatogonial stem cells (SSCs). Studies on knockout mice have shown that it is required for SSC self-renewal but not differentiation, thus affected mice exhibit progressive germ cell depletion.
Immunogen	Purified recombinant fragment of human ETV5 expressed in E. Coli.
Formulation	Ascitic fluid containing 0.03% sodium azide.

Additional Information

Gene ID	2119
Other Names	ETS translocation variant 5, Ets-related protein ERM, ETV5, ERM
Dilution	WB~~1/500 - 1/2000 E~~N/A
Storage	Maintain refrigerated at 2-8°C for up to 6 months. For long term storage store at -20°C in small aliquots to prevent freeze-thaw cycles.
Precautions	ETV5 Antibody is for research use only and not for use in diagnostic or therapeutic procedures.

Protein Information

Name	ETV5
Synonyms	ERM

Function	Binds to DNA sequences containing the consensus nucleotide core sequence 5'-GGAA.-3'.
Cellular Location	Nucleus.
Tissue Location	Ubiquitous.

References

1. Immunity. 2002 Oct;17(4):401-12. 2. Clin Cancer Res. 2004 Nov 1;10(21):7297-303. 3. J Hum Genet. 2009 Dec;54(12):727-31.

Images

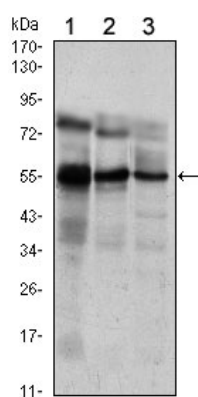


Figure 1: Western blot analysis using ETV5 mouse mAb against Jurkat (1), NIH/3T3 (2) and MCF-7 (3) cell lysate.

Please note: All products are 'FOR RESEARCH USE ONLY. NOT FOR USE IN DIAGNOSTIC OR THERAPEUTIC PROCEDURES'.