

SHH Antibody

Purified Mouse Monoclonal Antibody

Catalog # AO1409a

Product Information

Application	WB, E
Primary Accession	Q15465
Reactivity	Human
Host	Mouse
Clonality	Monoclonal
Clone Names	8G3
Isotype	IgG1
Calculated MW	49607
Description	<p>This gene encodes a protein that is instrumental in patterning the early embryo. It has been implicated as the key inductive signal in patterning of the ventral neural tube, the anterior-posterior limb axis, and the ventral somites. Of three human proteins showing sequence and functional similarity to the sonic hedgehog protein of <i>Drosophila</i>, this protein is the most similar. The protein is made as a precursor that is autocatalytically cleaved; the N-terminal portion is soluble and contains the signalling activity while the C-terminal portion is involved in precursor processing. More importantly, the C-terminal product covalently attaches a cholesterol moiety to the N-terminal product, restricting the N-terminal product to the cell surface and preventing it from freely diffusing throughout the developing embryo. Defects in this protein or in its signalling pathway are a cause of holoprosencephaly (HPE), a disorder in which the developing forebrain fails to correctly separate into right and left hemispheres. HPE is manifested by facial deformities. It is also thought that mutations in this gene or in its signalling pathway may be responsible for VACTERL syndrome, which is characterized by vertebral defects, anal atresia, tracheoesophageal fistula with esophageal atresia, radial and renal dysplasia, cardiac anomalies, and limb abnormalities. Additionally, mutations in a long range enhancer located approximately 1 megabase upstream of this gene disrupt limb patterning and can result in preaxial polydactyly.</p>
Immunogen	Purified recombinant fragment of human SHH expressed in <i>E. Coli</i> .
Formulation	Ascitic fluid containing 0.03% sodium azide.

Additional Information

Gene ID	6469
Other Names	Sonic hedgehog protein, SHH, HHG-1, Sonic hedgehog protein N-product, Sonic hedgehog protein C-product, SHH
Dilution	WB~~1/500 - 1/2000 E~~N/A

Storage	Maintain refrigerated at 2-8°C for up to 6 months. For long term storage store at -20°C in small aliquots to prevent freeze-thaw cycles.
Precautions	SHH Antibody is for research use only and not for use in diagnostic or therapeutic procedures.

Protein Information

Name	SHH (HGNC:10848)
Function	[Sonic hedgehog protein]: The C-terminal part of the sonic hedgehog protein precursor displays an autoproteolysis and a cholesterol transferase activity (By similarity). Both activities result in the cleavage of the full-length protein into two parts (ShhN and ShhC) followed by the covalent attachment of a cholesterol moiety to the C-terminal of the newly generated ShhN (By similarity). Both activities occur in the endoplasmic reticulum (By similarity). Once cleaved, ShhC is degraded in the endoplasmic reticulum (By similarity).
Cellular Location	[Sonic hedgehog protein]: Endoplasmic reticulum membrane. Golgi apparatus membrane. Secreted Note=Co-localizes with HHAT in the ER and Golgi membrane

References

1. Cancer Lett. 2010 Jan 1;287(1):44-53. 2. Oncogene. 2009 Oct 8;28(40):3513-25. 3. J Biol Chem. 2009 Nov 20;284(47):32562-71.

Images

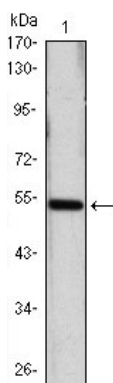


Figure 1: Western blot analysis using SHH mAb against SHH(AA: 26-161)-hIgGFc transfected HEK293 cell lysate.

Please note: All products are 'FOR RESEARCH USE ONLY. NOT FOR USE IN DIAGNOSTIC OR THERAPEUTIC PROCEDURES'.