

ALPP Antibody

Purified Mouse Monoclonal Antibody

Catalog # AO1414a

Product Information

Application	WB, IHC, E
Primary Accession	P05187
Reactivity	Human
Host	Mouse
Clonality	Monoclonal
Clone Names	3E5
Isotype	IgG2b
Calculated MW	57954
Description	<p>There are at least four distinct but related alkaline phosphatases: intestinal, placental, placental-like, and liver/bone/kidney (tissue non-specific). The first three are located together on chromosome 2 while the tissue non-specific form is located on chromosome 1. The product of this gene is a membrane bound glycosylated enzyme, also referred to as the heat stable form, that is expressed primarily in the placenta although it is closely related to the intestinal form of the enzyme as well as to the placental-like form. The coding sequence for this form of alkaline phosphatase is unique in that the 3' untranslated region contains multiple copies of an Alu family repeat. In addition, this gene is polymorphic and three common alleles (type 1, type 2 and type 3) for this form of alkaline phosphatase have been well characterized.</p>
Immunogen	Purified recombinant fragment of human ALPP expressed in E. Coli.
Formulation	Ascitic fluid containing 0.03% sodium azide.

Additional Information

Gene ID	250
Other Names	Alkaline phosphatase, placental type, 3.1.3.1, Alkaline phosphatase Regan isozyme, Placental alkaline phosphatase 1, PLAP-1, ALPP, PLAP
Dilution	WB~~1/500 - 1/2000 IHC~~1/200 - 1/1000 E~~N/A
Storage	Maintain refrigerated at 2-8°C for up to 6 months. For long term storage store at -20°C in small aliquots to prevent freeze-thaw cycles.
Precautions	ALPP Antibody is for research use only and not for use in diagnostic or therapeutic procedures.

Protein Information

Name	ALPP (HGNC:439)
Function	Alkaline phosphatase that can hydrolyze various phosphate compounds.
Cellular Location	Cell membrane; Lipid-anchor, GPI-anchor
Tissue Location	Detected in placenta (at protein level).

References

1. J Cell Biochem. 2003 Apr 1;88(5):1025-37. 2. J Mol Biol. 2005 Jul 15;350(3):441-51.

Images

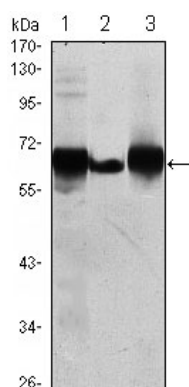


Figure 1: Western blot analysis using ALPP mouse mAb against HepG2 (1), A431 (2) and MCF-7 (3) cell lysate.

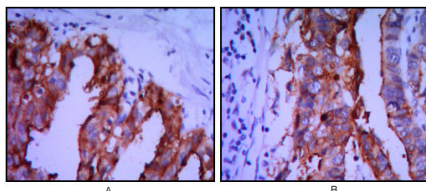


Figure 2: Immunohistochemical analysis of paraffin-embedded ovarian cancer (A), stomach cancer (B) using ALPP mouse mAb with DAB staining.

Please note: All products are 'FOR RESEARCH USE ONLY. NOT FOR USE IN DIAGNOSTIC OR THERAPEUTIC PROCEDURES'.