

STAT6 Antibody

Purified Mouse Monoclonal Antibody

Catalog # AO1421a

Product Information

Application	WB, ICC, E
Primary Accession	P42226
Reactivity	Human, Mouse, Rat, Monkey
Host	Mouse
Clonality	Monoclonal
Clone Names	7D3
Isotype	IgG1
Calculated MW	94135
Description	STAT6 protein is a transcription factor activated by cytokines, particularly interleukin 4 and IL 13. (STAT6 ^{-/-}) were found to be deficient in IL 4 mediated functions including Th2 helper T cell differentiation, expression of cell surface markers, T cell proliferation, immunoglobulin class switching to IgE, and partial loss of IL 4 mediated proliferation. STAT6 mRNA has been detected in peripheral blood lymphocytes, colon, intestine, ovary, prostate, thymus, spleen, kidney, liver, lung and placenta. STAT6 is critically involved in Th2 immune response.
Immunogen	Purified recombinant fragment of human STAT6 expressed in E. Coli.
Formulation	Ascitic fluid containing 0.03% sodium azide.

Additional Information

Gene ID	6778
Other Names	Signal transducer and activator of transcription 6, IL-4 Stat, STAT6
Dilution	WB~~1/500 - 1/2000 ICC~~N/A E~~N/A
Storage	Maintain refrigerated at 2-8°C for up to 6 months. For long term storage store at -20°C in small aliquots to prevent freeze-thaw cycles.
Precautions	STAT6 Antibody is for research use only and not for use in diagnostic or therapeutic procedures.

Protein Information

Name	STAT6
-------------	-------

Function	Carries out a dual function: signal transduction and activation of transcription. Involved in IL4/interleukin-4- and IL3/interleukin-3-mediated signaling.
Cellular Location	Cytoplasm. Nucleus. Note=Translocated into the nucleus in response to phosphorylation

References

1. Pediatr Nephrol. 2009 Mar;24(3):489-95. 2. Mol Immunol. 2009 Jun;46(10):2080-9. 3. Am J Hum Genet. 2009 Nov;85(5):628-42.

Images

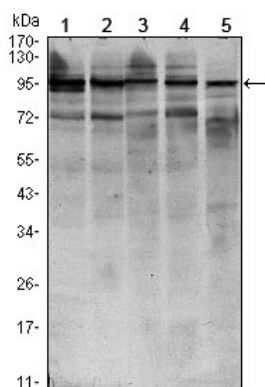


Figure 1: Western blot analysis using STAT6 mouse mAb against HEK293 (1), NIH/3T3 (2), MCF-7 (3), Raw246.7 (4) and PC-12 (5) cell lysate.

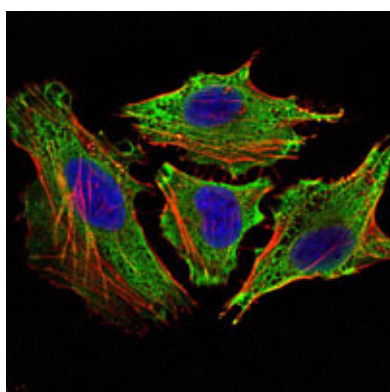


Figure 2: Immunofluorescence analysis of HeLa cells using STAT6 mouse mAb (green). Blue: DRAQ5 fluorescent DNA dye. Red: Actin filaments have been labeled with Alexa Fluor-555 phalloidin

Please note: All products are 'FOR RESEARCH USE ONLY. NOT FOR USE IN DIAGNOSTIC OR THERAPEUTIC PROCEDURES'.