

# KLHL11 Antibody

Purified Mouse Monoclonal Antibody

Catalog # AO1422a

## Product Information

---

<b>Application</b>	WB, FC, ICC, E
<b>Primary Accession</b>	<a href="#">Q9NVR0</a>
<b>Reactivity</b>	Human
<b>Host</b>	Mouse
<b>Clonality</b>	Monoclonal
<b>Clone Names</b>	1B9A8
<b>Isotype</b>	IgG1
<b>Calculated MW</b>	80148
<b>Description</b>	Kelch-like protein 11, Subcellular location Secreted.
<b>Immunogen</b>	Purified recombinant fragment of human KLHL11 expressed in E. Coli.
<b>Formulation</b>	Ascitic fluid containing 0.03% sodium azide.

## Additional Information

---

<b>Gene ID</b>	55175
<b>Other Names</b>	Kelch-like protein 11, KLHL11
<b>Dilution</b>	WB~~1/500 - 1/2000 FC~~1/200 - 1/400 ICC~~N/A E~~N/A
<b>Storage</b>	Maintain refrigerated at 2-8°C for up to 6 months. For long term storage store at -20°C in small aliquots to prevent freeze-thaw cycles.
<b>Precautions</b>	KLHL11 Antibody is for research use only and not for use in diagnostic or therapeutic procedures.

## Protein Information

---

<b>Name</b>	KLHL11
<b>Function</b>	Component of a cullin-RING-based BCR (BTB-CUL3-RBX1) E3 ubiquitin-protein ligase complex that mediates the ubiquitination of target proteins, leading most often to their proteasomal degradation.

## References

1. Gerhard DS, et al. Genome Res, 2004 Oct. 2. Ota T, et al. Nat Genet, 2004 Jan. 3. Strausberg RL, et al. Proc Natl Acad Sci U S A, 2002 Dec 24.

## Images

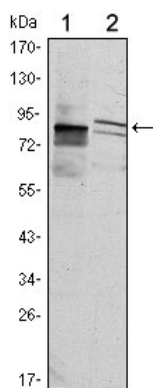


Figure 1: Western blot analysis using KLHL11 mouse mAb against Hela (1) and MCF-7 (2) cell lysate.

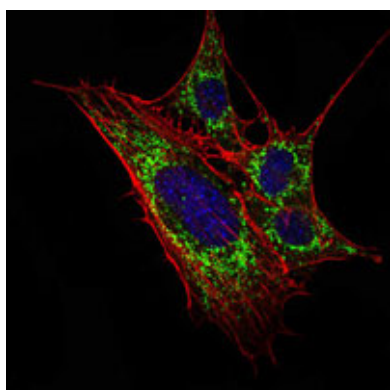


Figure 2: Immunofluorescence analysis of 3T3-L1 cells using KLHL11 mouse mAb (green). Blue: DRAQ5 fluorescent DNA dye. Red: Actin filaments have been labeled with Alexa Fluor-555 phalloidin.

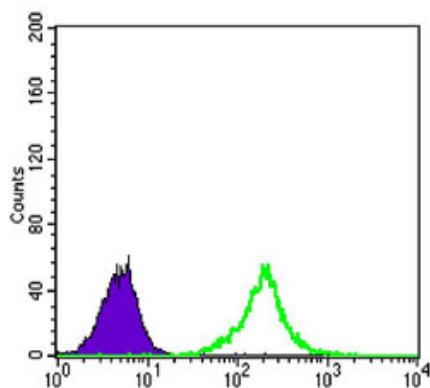


Figure 3: Flow cytometric analysis of K562 cells using KLHL11 mouse mAb (green) and negative control (purple).

Please note: All products are 'FOR RESEARCH USE ONLY. NOT FOR USE IN DIAGNOSTIC OR THERAPEUTIC PROCEDURES'.