

KLHL11 Antibody

Purified Mouse Monoclonal Antibody

Catalog # AO1423a

Product Information

Application	WB, IHC, ICC, E
Primary Accession	Q9NVR0
Reactivity	Human
Host	Mouse
Clonality	Monoclonal
Clone Names	1B9C1
Isotype	IgG1
Calculated MW	80148
Description	Kelch-like protein 11, Subcellular location Secreted.
Immunogen	Purified recombinant fragment of human KLHL11 expressed in E. Coli.
Formulation	Ascitic fluid containing 0.03% sodium azide.

Additional Information

Gene ID	55175
Other Names	Kelch-like protein 11, KLHL11
Dilution	WB~~1/500 - 1/2000 IHC~~1/500 - 1/2000 ICC~~N/A E~~N/A
Storage	Maintain refrigerated at 2-8°C for up to 6 months. For long term storage store at -20°C in small aliquots to prevent freeze-thaw cycles.
Precautions	KLHL11 Antibody is for research use only and not for use in diagnostic or therapeutic procedures.

Protein Information

Name	KLHL11
Function	Component of a cullin-RING-based BCR (BTB-CUL3-RBX1) E3 ubiquitin-protein ligase complex that mediates the ubiquitination of target proteins, leading most often to their proteasomal degradation.

References

1. Gerhard DS, et al. Genome Res, 2004 Oct. 2. Ota T, et al. Nat Genet, 2004 Jan. 3. Strausberg RL, et al. Proc Natl Acad Sci U S A, 2002 Dec 24.

Images

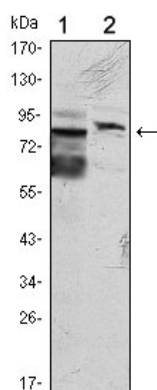


Figure 1: Western blot analysis using KLHL11 mouse mAb against HeLa (1) and MCF-7 (2) cell lysate.

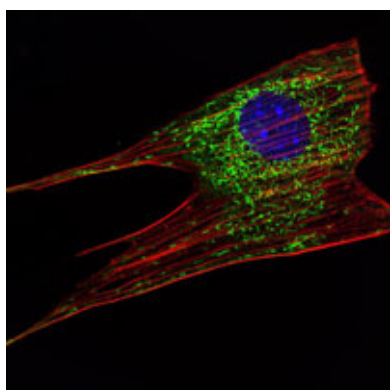


Figure 2: Immunofluorescence analysis of NIH/3T3 cells using KLHL11 mouse mAb (green). Blue: DRAQ5 fluorescent DNA dye. Red: Actin filaments have been labeled with Alexa Fluor-555 phalloidin.

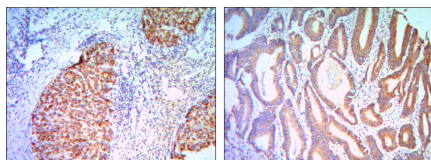


Figure 3: Immunohistochemical analysis of paraffin-embedded liver cancer (right) and colon cancer tissues (left) using KLHL11 mouse mAb with DAB staining.

Please note: All products are 'FOR RESEARCH USE ONLY. NOT FOR USE IN DIAGNOSTIC OR THERAPEUTIC PROCEDURES'.