

# EPO Antibody

Purified Mouse Monoclonal Antibody

Catalog # AO1446a

## Product Information

---

<b>Application</b>	WB, ICC, E
<b>Primary Accession</b>	<a href="#">P01588</a>
<b>Reactivity</b>	Human
<b>Host</b>	Mouse
<b>Clonality</b>	Monoclonal
<b>Clone Names</b>	4F11
<b>Isotype</b>	IgG1
<b>Calculated MW</b>	21307
<b>Description</b>	Human erythropoietin is member of the EPO/TPO family and encodes a secreted, glycosylated cytokine hormone composed of four alpha helical bundles. The protein is found in the plasma and regulates red cell production by promoting erythroid differentiation and initiating hemoglobin synthesis. This protein also has neuroprotective activity against a variety of potential brain injuries and antiapoptotic functions in several tissue types. It is produced by kidney or liver of adult mammals and by liver of fetal or neonatal mammals. Tissue specificity: Produced by kidney or liver of adult mammals and by liver of fetal or neonatal mammals.
<b>Immunogen</b>	Purified recombinant fragment of human EPO expressed in E. Coli.
<b>Formulation</b>	Ascitic fluid containing 0.03% sodium azide.

## Additional Information

---

<b>Gene ID</b>	2056
<b>Other Names</b>	Erythropoietin, Epoetin, EPO
<b>Dilution</b>	WB~~1/500 - 1/2000 ICC~~N/A E~~N/A
<b>Storage</b>	Maintain refrigerated at 2-8°C for up to 6 months. For long term storage store at -20°C in small aliquots to prevent freeze-thaw cycles.
<b>Precautions</b>	EPO Antibody is for research use only and not for use in diagnostic or therapeutic procedures.

## Protein Information

---

<b>Name</b>	EPO
-------------	-----

<b>Function</b>	Hormone involved in the regulation of erythrocyte proliferation and differentiation and the maintenance of a physiological level of circulating erythrocyte mass (PubMed: <a href="#">28283061</a> ). Binds to EPOR leading to EPOR dimerization and JAK2 activation thereby activating specific downstream effectors, including STAT1 and STAT3 (PubMed: <a href="#">9774108</a> ).
<b>Cellular Location</b>	Secreted.
<b>Tissue Location</b>	Produced by kidney or liver of adult mammals and by liver of fetal or neonatal mammals.

## References

1. J Negat Results Biomed. 2008 Nov 13;7:9. 2. J Biol Chem. 2009 Feb 13;284(7):4567-81.

## Images

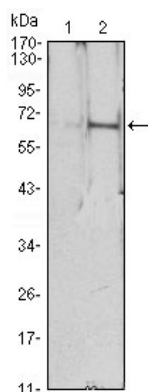


Figure 1: Western blot analysis using EPO mAb against HEK293 (1) and EPO(AA: 28-193)-hIgGFc transfected HEK293 (2) cell lysate.

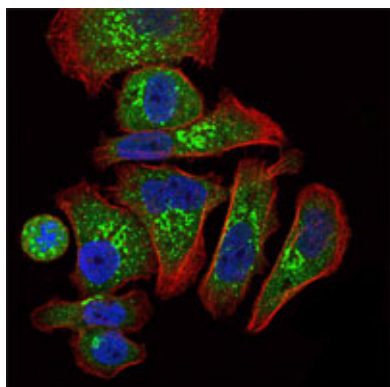


Figure 2: Immunofluorescence analysis of GC7901 cells using EPO mouse mAb (green). Blue: DRAQ5 fluorescent DNA dye. Red: Actin filaments have been labeled with Alexa Fluor-555 phalloidin.

Please note: All products are 'FOR RESEARCH USE ONLY. NOT FOR USE IN DIAGNOSTIC OR THERAPEUTIC PROCEDURES'.