

SCGB2A2 Antibody

Purified Mouse Monoclonal Antibody

Catalog # AO1478a

Product Information

Application	WB, IHC, FC, ICC, E
Primary Accession	Q13296
Reactivity	Human
Host	Mouse
Clonality	Monoclonal
Clone Names	3C8
Isotype	IgG1
Calculated MW	10499
Description	Mammaglobin is a gene that is expressed almost exclusively in the normal breast epithelium and human breast cancer. It is a member of the secretoglobulin gene family and forms a heterodimer with lipophilin B. It has been suggested that mammaglobin may be a useful marker for breast cancer clinical research. Studies investigating the detection of mRNA by RT PCR from circulating carcinoma cells in the peripheral blood of breast cancer patients have shown that mammaglobin is a highly specific marker and correlates with several prognostic factors, such as lymph node involvement. Tissue specificity: Mammary gland specific. Over-expressed in breast cancer.
Immunogen	Purified recombinant fragment of human SCGB2A2 expressed in E. Coli.
Formulation	Ascitic fluid containing 0.03% sodium azide.

Additional Information

Gene ID	4250
Other Names	Mammaglobin-A, Mammaglobin-1, Secretoglobulin family 2A member 2, SCGB2A2, MGB1, UGB2
Dilution	WB~~1/500 - 1/2000 IHC~~1/200 - 1/1000 FC~~1/200 - 1/400 ICC~~N/A E~~N/A
Storage	Maintain refrigerated at 2-8°C for up to 6 months. For long term storage store at -20°C in small aliquots to prevent freeze-thaw cycles.
Precautions	SCGB2A2 Antibody is for research use only and not for use in diagnostic or therapeutic procedures.

Protein Information

Name	SCGB2A2
Synonyms	MGB1, UGB2
Cellular Location	Secreted.
Tissue Location	Mammary gland specific. Over-expressed in breast cancer

References

1. Ann Oncol. 2006 Jun;17 Suppl 7:vii41-5. 2. Mod Pathol. 2007 Feb;20(2):208-14.

Images

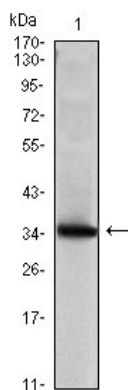


Figure 1: Western blot analysis using SCGB2A2 mAb against human SCGB2A2 (AA: 2-93) recombinant protein. (Expected MW is 35.8 kDa)

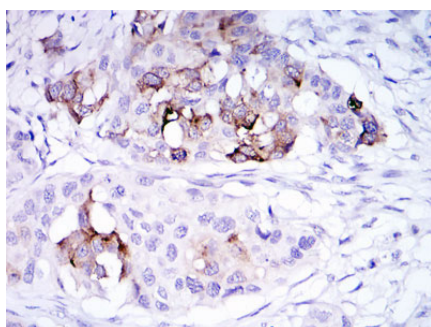


Figure 2: Immunohistochemical analysis of paraffin-embedded mammary cancer tissues using SCGB2A2 mouse mAb with DAB staining.

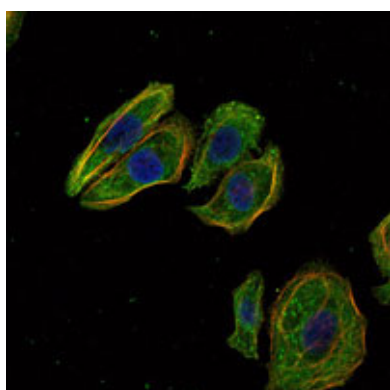
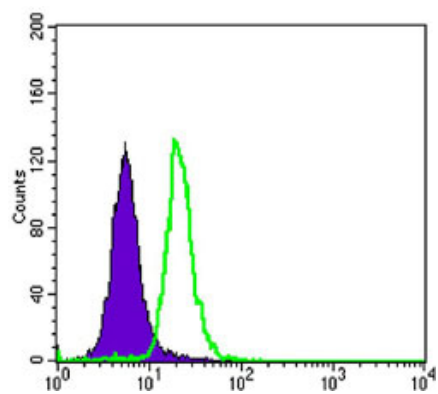


Figure 3: Immunofluorescence analysis of HeLa cells using SCGB2A2 mouse mAb (green). Blue: DRAQ5 fluorescent DNA dye. Red: Actin filaments have been labeled with Alexa Fluor-555 phalloidin.

Figure 4: Flow cytometric analysis of SK-BR-3 cells using SCGB2A2 mouse mAb (green) and negative control (purple).



Please note: All products are 'FOR RESEARCH USE ONLY. NOT FOR USE IN DIAGNOSTIC OR THERAPEUTIC PROCEDURES'.