

SUZ12 Antibody

Purified Mouse Monoclonal Antibody

Catalog # AO1495a

Product Information

Application	WB, IHC, E
Primary Accession	Q15022
Reactivity	Human
Host	Mouse
Clonality	Monoclonal
Clone Names	3D10
Isotype	IgG1
Calculated MW	83055
Description	This zinc finger gene has been identified at the breakpoints of a recurrent chromosomal translocation reported in endometrial stromal sarcoma. Recombination of these breakpoints results in the fusion of this gene and JAZF1. The protein encoded by this gene contains a zinc finger domain in the C terminus of the coding region. (Provided by RefSeq) SUZ12 is overexpressed in several human tumors, including tumors of the colon, breast and liver. Tissue specificity: Overexpressed in breast and colon cancer.
Immunogen	Purified recombinant fragment of human SUZ12 expressed in E. Coli.
Formulation	Ascitic fluid containing 0.03% sodium azide.

Additional Information

Gene ID	23512
Other Names	Polycomb protein SUZ12, Chromatin precipitated E2F target 9 protein, ChET 9 protein, Joined to JAZF1 protein, Suppressor of zeste 12 protein homolog, SUZ12, CHET9, JJAZ1, KIAA0160
Dilution	WB~~1/500 - 1/2000 IHC~~1/200 - 1/1000 E~~N/A
Storage	Maintain refrigerated at 2-8°C for up to 6 months. For long term storage store at -20°C in small aliquots to prevent freeze-thaw cycles.
Precautions	SUZ12 Antibody is for research use only and not for use in diagnostic or therapeutic procedures.

Protein Information

Name	SUZ12
-------------	-------

Synonyms

CHET9, JJAZ1, KIAA0160

Function

Polycomb group (PcG) protein. Component of the PRC2 complex, which methylates 'Lys-9' (H3K9me) and 'Lys-27' (H3K27me) of histone H3, leading to transcriptional repression of the affected target gene (PubMed:[15225548](#), PubMed:[15231737](#), PubMed:[15385962](#), PubMed:[16618801](#), PubMed:[17344414](#), PubMed:[18285464](#), PubMed:[28229514](#), PubMed:[29499137](#), PubMed:[31959557](#)). The PRC2 complex may also serve as a recruiting platform for DNA methyltransferases, thereby linking two epigenetic repression systems (PubMed:[12351676](#), PubMed:[12435631](#), PubMed:[15099518](#), PubMed:[15225548](#), PubMed:[15385962](#), PubMed:[15684044](#), PubMed:[16431907](#), PubMed:[18086877](#), PubMed:[18285464](#)). Genes repressed by the PRC2 complex include HOXC8, HOXA9, MYT1 and CDKN2A (PubMed:[15231737](#), PubMed:[16618801](#), PubMed:[17200670](#), PubMed:[31959557](#)).

Cellular Location

Nucleus Note=Localizes to chromatin as part of the PRC2 complex

Tissue Location

Overexpressed in breast and colon cancer.

References

1. Mol Cell. 2008 Nov 21;32(4):503-18. 2. Nat Cell Biol. 2008 Nov;10(11):1291-300.

Images

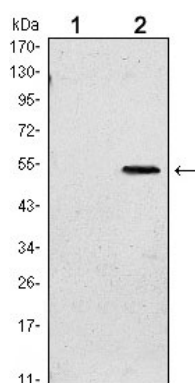


Figure 1: Western blot analysis using SUZ12 mAb against HEK293 (1) and SUZ12(AA: 533-739)-hIgGfC transfected HEK293 (2) cell lysate.

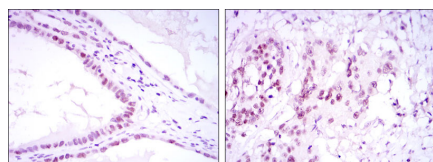


Figure 2: Immunohistochemical analysis of paraffin-embedded kidney convoluted tubule tissues (left) and esophageal cancer tissues (right) using SUZ12 mouse mAb with DAB staining.

Please note: All products are 'FOR RESEARCH USE ONLY. NOT FOR USE IN DIAGNOSTIC OR THERAPEUTIC PROCEDURES'.