

PRKDC Antibody

Purified Mouse Monoclonal Antibody

Catalog # AO1522a

Product Information

Application	WB, IHC, ICC, E
Primary Accession	P78527
Reactivity	Human
Host	Mouse
Clonality	Monoclonal
Clone Names	3H6
Isotype	IgG1
Calculated MW	469089
Description	The PRKDC gene encodes the catalytic subunit of a nuclear DNA-dependent serine/threonine protein kinase (DNA-PK). The second component is the autoimmune antigen Ku (MIM 152690), which is encoded by the G22P1 gene on chromosome 22q. On its own, the catalytic subunit of DNA-PK is inactive and relies on the G22P1 component to direct it to the DNA and trigger its kinase activity; PRKDC must be bound to DNA to express its catalytic properties.
Immunogen	Purified recombinant fragment of human PRKDC expressed in E. Coli.
Formulation	Ascitic fluid containing 0.03% sodium azide.

Additional Information

Gene ID	5591
Other Names	DNA-dependent protein kinase catalytic subunit, DNA-PK catalytic subunit, DNA-PKcs, 2.7.11.1, DNPK1, p460, PRKDC, HYRC, HYRC1
Dilution	WB~~1/500 - 1/2000 IHC~~1/200 - 1/1000 ICC~~N/A E~~1/10000
Storage	Maintain refrigerated at 2-8°C for up to 6 months. For long term storage store at -20°C in small aliquots to prevent freeze-thaw cycles.
Precautions	PRKDC Antibody is for research use only and not for use in diagnostic or therapeutic procedures.

Protein Information

Name	PRKDC
Synonyms	HYRC, HYRC1

Function

Serine/threonine-protein kinase that acts as a molecular sensor for DNA damage (PubMed:[11955432](#), PubMed:[12649176](#), PubMed:[14734805](#), PubMed:[33854234](#)). Involved in DNA non-homologous end joining (NHEJ) required for double-strand break (DSB) repair and V(D)J recombination (PubMed:[11955432](#), PubMed:[12649176](#), PubMed:[14734805](#), PubMed:[33854234](#), PubMed:[34352203](#)). Must be bound to DNA to express its catalytic properties (PubMed:[11955432](#)). Promotes processing of hairpin DNA structures in V(D)J recombination by activation of the hairpin endonuclease artemis (DCLRE1C) (PubMed:[11955432](#)). Recruited by XRCC5 and XRCC6 to DNA ends and is required to (1) protect and align broken ends of DNA, thereby preventing their degradation, (2) and sequester the DSB for repair by NHEJ (PubMed:[11955432](#), PubMed:[12649176](#), PubMed:[14734805](#), PubMed:[15574326](#), PubMed:[33854234](#)). Acts as a scaffold protein to aid the localization of DNA repair proteins to the site of damage (PubMed:[11955432](#), PubMed:[12649176](#), PubMed:[14734805](#), PubMed:[15574326](#)). The assembly of the DNA-PK complex at DNA ends is also required for the NHEJ ligation step (PubMed:[11955432](#), PubMed:[12649176](#), PubMed:[14734805](#), PubMed:[15574326](#)). Found at the ends of chromosomes, suggesting a further role in the maintenance of telomeric stability and the prevention of chromosomal end fusion (By similarity). Also involved in modulation of transcription (PubMed:[11955432](#), PubMed:[12649176](#), PubMed:[14734805](#), PubMed:[15574326](#)). As part of the DNA-PK complex, involved in the early steps of ribosome assembly by promoting the processing of precursor rRNA into mature 18S rRNA in the small-subunit processome (PubMed:[32103174](#)). Binding to U3 small nucleolar RNA, recruits PRKDC and XRCC5/Ku86 to the small-subunit processome (PubMed:[32103174](#)). Recognizes the substrate consensus sequence [ST]-Q (PubMed:[11955432](#), PubMed:[12649176](#), PubMed:[14734805](#), PubMed:[15574326](#)). Phosphorylates 'Ser-139' of histone variant H2AX, thereby regulating DNA damage response mechanism (PubMed:[14627815](#), PubMed:[16046194](#)). Phosphorylates ASF1A, DCLRE1C, c-Abl/ABL1, histone H1, HSPCA, c-jun/JUN, p53/TP53, PARP1, POU2F1, DHX9, FH, SRF, NHEJ1/XLF, XRCC1, XRCC4, XRCC5, XRCC6, WRN, MYC and RFA2 (PubMed:[10026262](#), PubMed:[10467406](#), PubMed:[11889123](#), PubMed:[12509254](#), PubMed:[14599745](#), PubMed:[14612514](#), PubMed:[14704337](#), PubMed:[15177042](#), PubMed:[1597196](#), PubMed:[16397295](#), PubMed:[18644470](#), PubMed:[2247066](#), PubMed:[2507541](#), PubMed:[26237645](#), PubMed:[26666690](#), PubMed:[28712728](#), PubMed:[29478807](#), PubMed:[30247612](#), PubMed:[8407951](#), PubMed:[8464713](#), PubMed:[9139719](#), PubMed:[9362500](#)). Can phosphorylate C1D not only in the presence of linear DNA but also in the presence of supercoiled DNA (PubMed:[9679063](#)). Ability to phosphorylate p53/TP53 in the presence of supercoiled DNA is dependent on C1D (PubMed:[9363941](#)). Acts as a regulator of the phosphatidylinositol 3-kinase/protein kinase B signal transduction by mediating phosphorylation of 'Ser-473' of protein kinase B (PKB/AKT1, PKB/AKT2, PKB/AKT3), promoting their activation (PubMed:[15262962](#)). Contributes to the determination of the circadian period length by antagonizing phosphorylation of CRY1 'Ser-588' and increasing CRY1 protein stability, most likely through an indirect mechanism (By similarity). Plays a role in the regulation of DNA virus-mediated innate immune response by assembling into the HDP-RNP complex, a complex that serves as a platform for IRF3 phosphorylation and subsequent innate immune response activation through the cGAS-STING pathway (PubMed:[28712728](#)). Also regulates the cGAS-STING pathway by catalyzing phosphorylation of CGAS, thereby impairing CGAS oligomerization and activation (PubMed:[33273464](#)). Also regulates the cGAS-STING pathway by mediating phosphorylation of PARP1 (PubMed:[35460603](#)).

Cellular Location

Nucleus. Nucleus, nucleolus. Cytoplasm, cytosol

References

1. J Biol Chem. 2008 Dec 26;283(52):36311-20. 2. Proc Natl Acad Sci U S A. 2008 Sep 2;105(35):12791-6.

Images

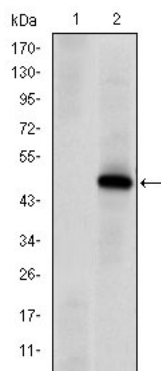


Figure 1: Western blot analysis using PRKDC mAb against HEK293 (1) and PRKDC(AA: 2638-2971)-hIgGFc transfected HEK293 (2) cell lysate.

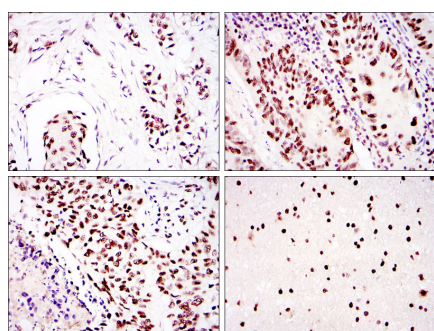


Figure 2: Immunohistochemical analysis of paraffin-embedded breast cancer (left) and colon cancer (right) using PRKDC mouse mAb with DAB staining.

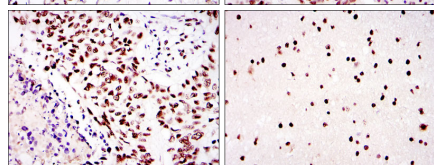


Figure 3: Immunohistochemical analysis of paraffin-embedded lung cancer (left) and brain tissues (right) using PRKDC mouse mAb with DAB staining.

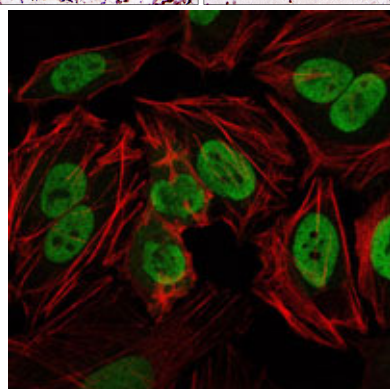


Figure 4: Immunofluorescence analysis of HeLa cells using PRKDC mouse mAb (green). Red: Actin filaments have been labeled with Alexa Fluor-555 phalloidin.

Please note: All products are 'FOR RESEARCH USE ONLY. NOT FOR USE IN DIAGNOSTIC OR THERAPEUTIC PROCEDURES'.