

MSI1 Antibody

Purified Mouse Monoclonal Antibody

Catalog # AO1529a

Product Information

Application	WB, FC, E
Primary Accession	O43347
Reactivity	Human
Host	Mouse
Clonality	Monoclonal
Clone Names	2A12
Isotype	IgG1
Calculated MW	39125
Description	This gene encodes a protein containing two conserved tandem RNA recognition motifs. Similar proteins in other species function as RNA-binding proteins and play central roles in posttranscriptional gene regulation. Expression of this gene has been correlated with the grade of the malignancy and proliferative activity in gliomas and melanomas. Musashi-1 is frequently used as a marker for proliferating neural precursor cells, it is also expressed in epithelial stem cells including intestinal and mammary gland stem cells. Tissue specificity: Detected in fetal kidney, brain, liver and lung, and in adult brain and pancreas. Detected in hepatoma cell lines.
Immunogen	Purified recombinant fragment of human MSI1 expressed in E. Coli.
Formulation	Ascitic fluid containing 0.03% sodium azide.

Additional Information

Gene ID	4440
Other Names	RNA-binding protein Musashi homolog 1, Musashi-1, MSI1
Dilution	WB~~1/500 - 1/2000 FC~~1/200 - 1/400 E~~1/10000
Storage	Maintain refrigerated at 2-8°C for up to 6 months. For long term storage store at -20°C in small aliquots to prevent freeze-thaw cycles.
Precautions	MSI1 Antibody is for research use only and not for use in diagnostic or therapeutic procedures.

Protein Information

Name	MSI1
-------------	------

Function	RNA binding protein that regulates the expression of target mRNAs at the translation level. Regulates expression of the NOTCH1 antagonist NUMB. Binds RNA containing the sequence 5'-GUUAGUUAGUUAGUU- 3' and other sequences containing the pattern 5'-[GA]U(1-3)AGU-3'. May play a role in the proliferation and maintenance of stem cells in the central nervous system (By similarity).
Cellular Location	Cytoplasm {ECO:0000250 UniProtKB:Q61474}. Nucleus {ECO:0000250 UniProtKB:Q61474}
Tissue Location	Detected in fetal kidney, brain, liver and lung, and in adult brain and pancreas. Detected in hepatoma cell lines

References

1. BMC Cancer. 2008 Apr 18;8:108. 2. Gastroenterology. 2008 May;134(5):1448-58.

Images

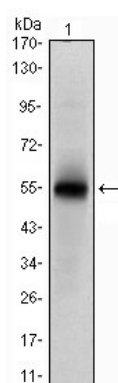


Figure 1: Western blot analysis using MSI1 mAb against human MSI1 (AA: 1-203) recombinant protein. (Expected MW is 48.5 kDa)

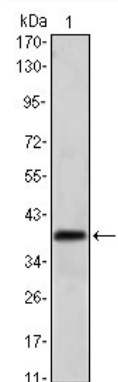


Figure 2: Western blot analysis using MSI1 mouse mAb against NTERA-2 cell lysate.

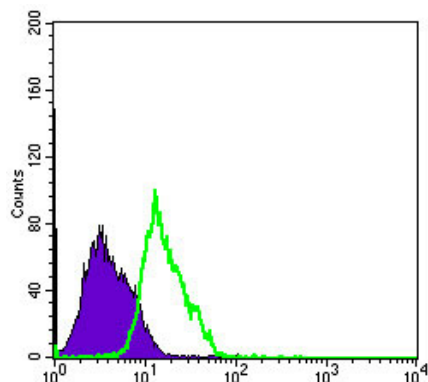


Figure 3: Flow cytometric analysis of PC-2 cells using MSI1 mouse mAb (green) and negative control (purple).

Please note: All products are 'FOR RESEARCH USE ONLY. NOT FOR USE IN DIAGNOSTIC OR THERAPEUTIC PROCEDURES'.