

CD1A Antibody

Purified Mouse Monoclonal Antibody

Catalog # AO1538a

Product Information

Application	WB, IHC, ICC, E
Primary Accession	P06126
Reactivity	Human
Host	Mouse
Clonality	Monoclonal
Clone Names	7A7
Isotype	IgG1
Calculated MW	37077
Description	CD1a is a non polymorphic MHC Class 1 related cell surface glycoprotein, expressed in association with Beta 2 microglobulin. CD1a is expressed by cortical thymocytes, Langerhan's cells and by interdigitating cells. CD1a is also expressed by some malignancies of T cell lineage and in histiocytosis X. Tissue specificity: Expressed on cortical thymocytes, epidermal Langerhans cells, dendritic cells, on certain T-cell leukemias, and in various other tissues.
Immunogen	Purified recombinant fragment of human CD1A expressed in E. Coli.
Formulation	Ascitic fluid containing 0.03% sodium azide.

Additional Information

Gene ID	909
Other Names	T-cell surface glycoprotein CD1a, T-cell surface antigen T6/Leu-6, hTa1 thymocyte antigen, CD1a, CD1A
Dilution	WB~~1/500 - 1/2000 IHC~~1/200 - 1/1000 ICC~~N/A E~~1/10000
Storage	Maintain refrigerated at 2-8°C for up to 6 months. For long term storage store at -20°C in small aliquots to prevent freeze-thaw cycles.
Precautions	CD1A Antibody is for research use only and not for use in diagnostic or therapeutic procedures.

Protein Information

Name	CD1A
Function	Antigen-presenting protein that binds self and non-self lipid and glycolipid antigens and presents them to T-cell receptors on natural killer T-cells.

Cellular Location

Cell membrane; Single-pass type I membrane protein. Membrane raft; Single-pass type I membrane protein. Endosome membrane; Single-pass type I membrane protein. Note=Subject to intracellular trafficking between the cell membrane and endosomes (PubMed:11231314). Localizes to cell surface lipid rafts (PubMed:18178838).

Tissue Location

Expressed on cortical thymocytes, epidermal Langerhans cells, dendritic cells, on certain T-cell leukemias, and in various other tissues.

References

1. J Neuroimmunol. 2008 Dec 15;205(1-2):110-2. 2. Pathol Int. 2008 Mar;58(3):169-73.

Images

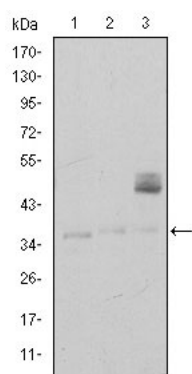


Figure 1: Western blot analysis using CD1A mouse mAb against K562 (1), RAJI (2), and MOLT4 (3) cell lysate.

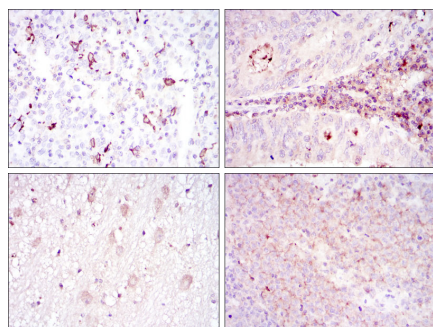


Figure 2: Immunohistochemical analysis of paraffin-embedded cervical cancer tissues (left) and colon cancer tissues (right) using CD1A mouse mAb with DAB staining.

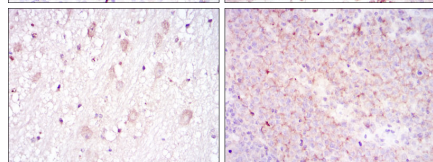


Figure 3: Immunohistochemical analysis of paraffin-embedded brain tissues (left) and submaxillary tumor tissues (right) using CD1A mouse mAb with DAB staining.

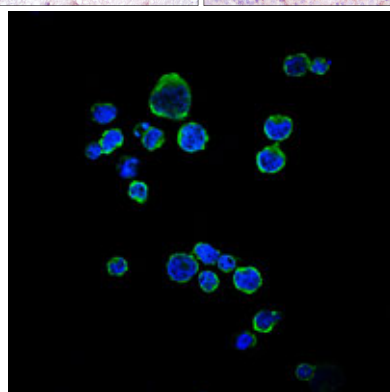


Figure 4: Immunofluorescence analysis of RAJI cells using CD1A mouse mAb (green). Blue: DRAQ5 fluorescent DNA dye.

Please note: All products are 'FOR RESEARCH USE ONLY. NOT FOR USE IN DIAGNOSTIC OR THERAPEUTIC PROCEDURES'.